

A TECH

AE TECHNOLOGY SRL

Via Vittorio Veneto, 12
20091 Bresso (MI)
TEL +39 02 35988192
www.aetechno.com
info@aetechno.com





NEVER STOP ELEVATING

YOUR VET EXPERIENCE.

The logo for esaote, featuring a stylized '@' symbol in a grey circle followed by the word 'saote' in a bold, red, lowercase sans-serif font.

MYLAB™ VET PRODUCT LINE

MyLab™ VET **OUTSTANDING PRODUCT LINE**

A GLOBAL LEADER

Esaote is a recognized global leader in ultrasound veterinary imaging, focused on providing smart solutions for your everyday practice.

30 YEARS EXPERIENCE

Thanks to 30 years experience, a wide range of products has been designed specifically for your needs, from cart-based complete systems to compact portable products.

DEDICATION AND VISION

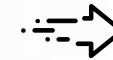
Our mission is to follow you all the way, supporting your daily workflow and elevating your vet experience through new advanced approaches and technologies.



**Dedicated vet software
and probes**



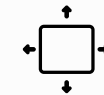
Windows® 10



Fast start-up



Zero-click technology



Full-screen visualization



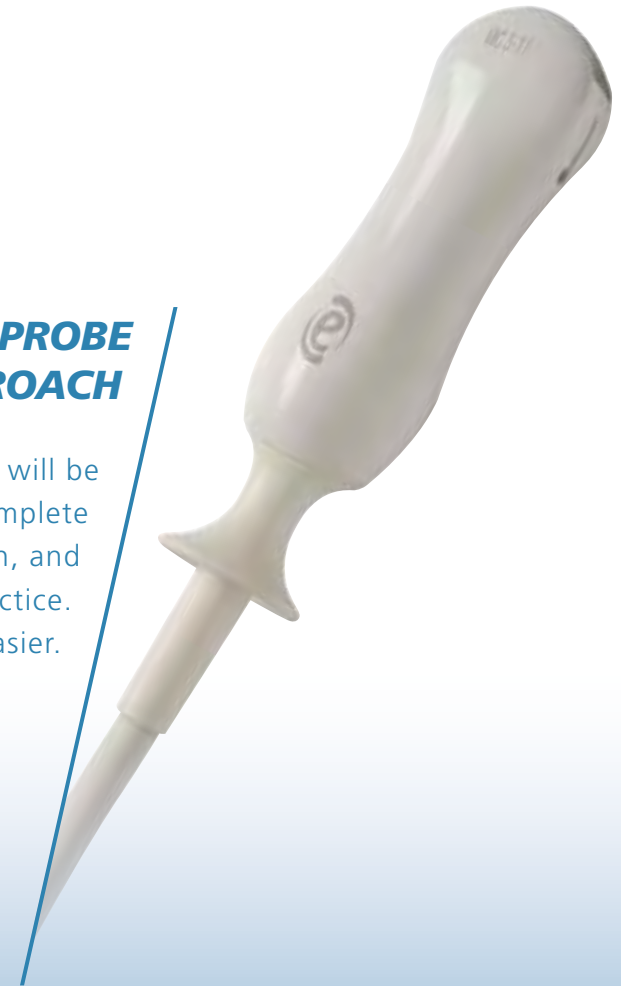
**High response
capacitive touchscreen**



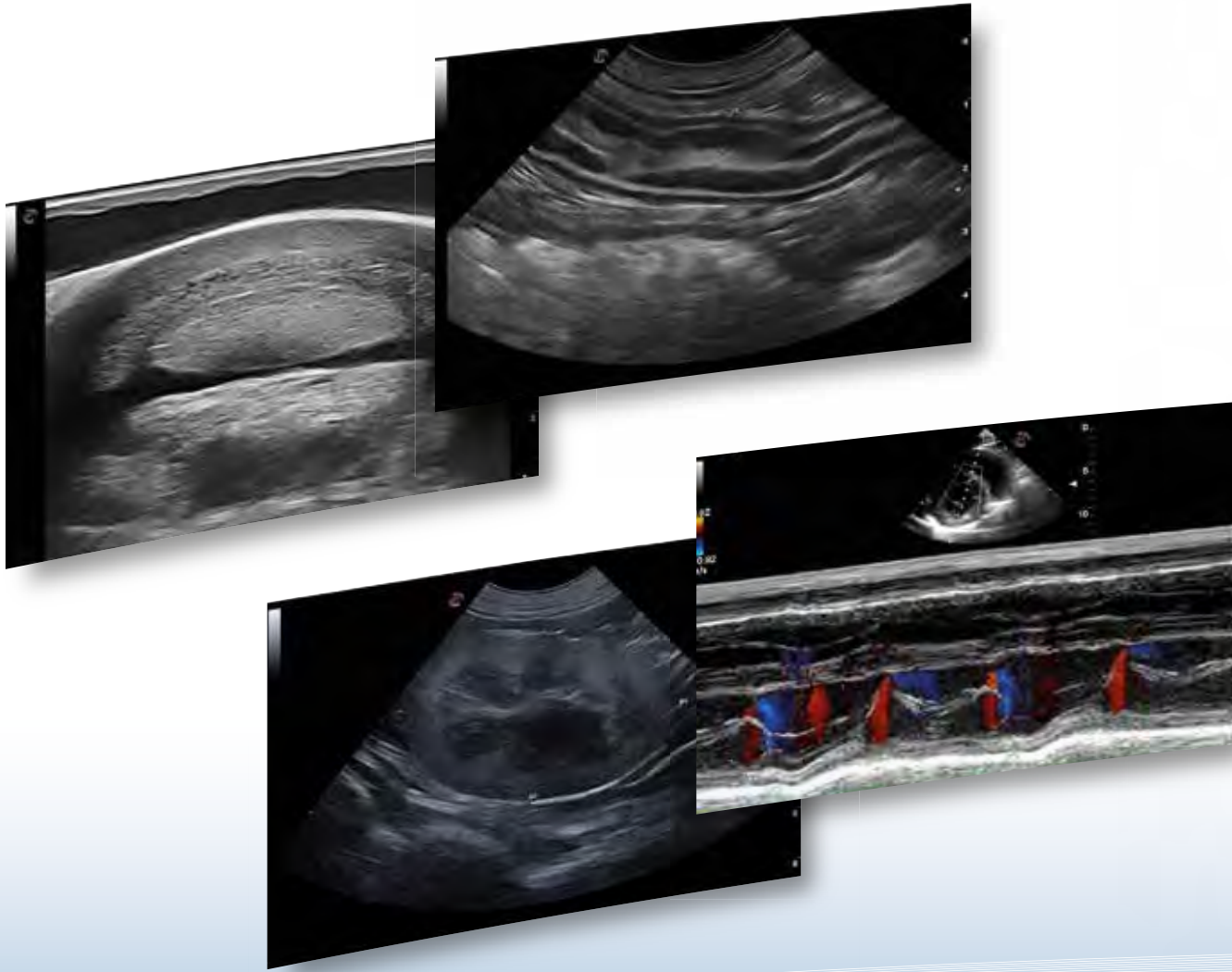
Ultrasound
**HAS NEVER BEEN
EASIER**

**SINGLE PROBE
APPROACH**

With just one probe it will be possible to make a complete imaging medical examination, and simplify your everyday practice. Ultrasound has never been easier.



**FROM CARDIAC AND ABDOMINAL
TO ORTHOPEDIC APPLICATIONS**



NEVER STOP ELEVATING YOUR VET EXPERIENCE



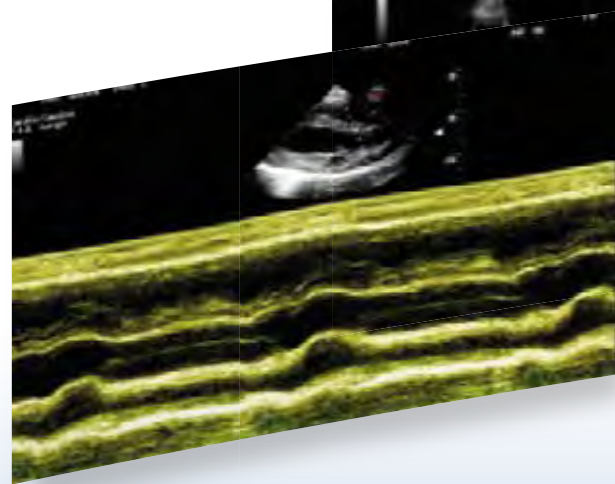
Complete **CARDIOVASCULAR PACKAGE**

MAKE FAST AND ACCURATE DIAGNOSES ADDING VALUE TO YOUR EXAMINATIONS:

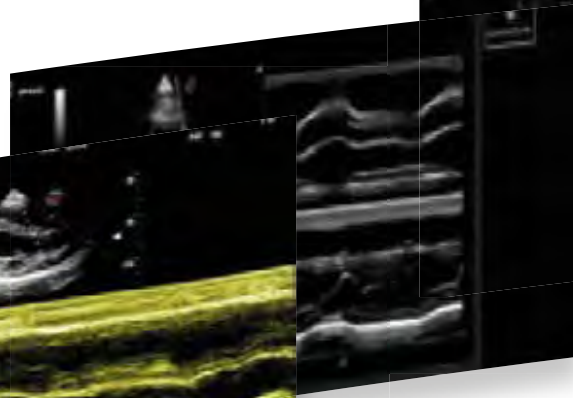
- **CMM** - M-Mode quality & cardiac examination efficiency
- **TVM** - wall motion analysis for myocardial function
- **Zero-click EF** - automatic ejection fraction computation
- **XStrain™** - endocardial velocity quantification & heart deformation detection
- **Smart stress-echo** - complete ejection fraction reporting for cardiac segment evaluation



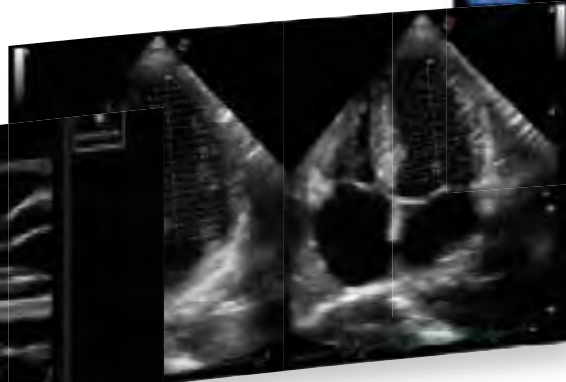
M-Mode



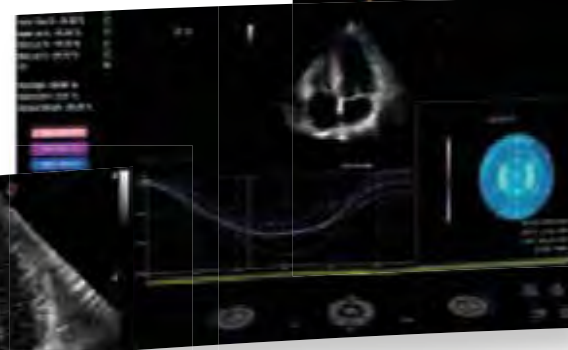
CMM & TVM



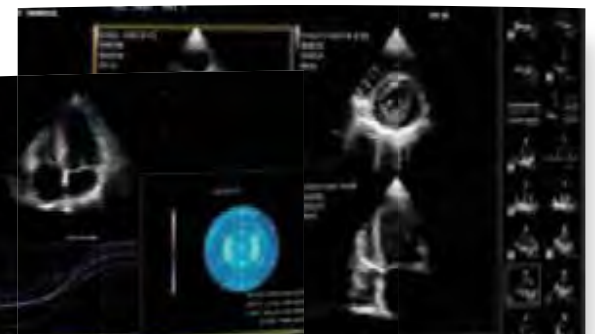
Zero-click EF



XStrain™



Smart stress-echo package



Fast and accurate diagnosis

NEVER STOP ELEVATING YOUR VET EXPERIENCE



Clinical confidence
**REQUIRES HIGH
PERFORMANCE &
ADVANCED TOOLS**

- **22 MHz probe** with very high-res images
- **microV** - fast non-invasive hemodynamic evaluation with high sensitivity for lesion characterization
- **Needle @enhancement** - valuable aid in interventional practice
- **ElaXto** - non-invasive assessment of tissue elasticity
- **Fusion imaging** - CT, MRI side-by-side with real-time ultrasound
- **CnTI™** - advanced technology for Contrast Enhanced Ultrasound (CEUS) imaging
- **QPack** - multimodality quantification tool for CnTI™, Color & Power Doppler



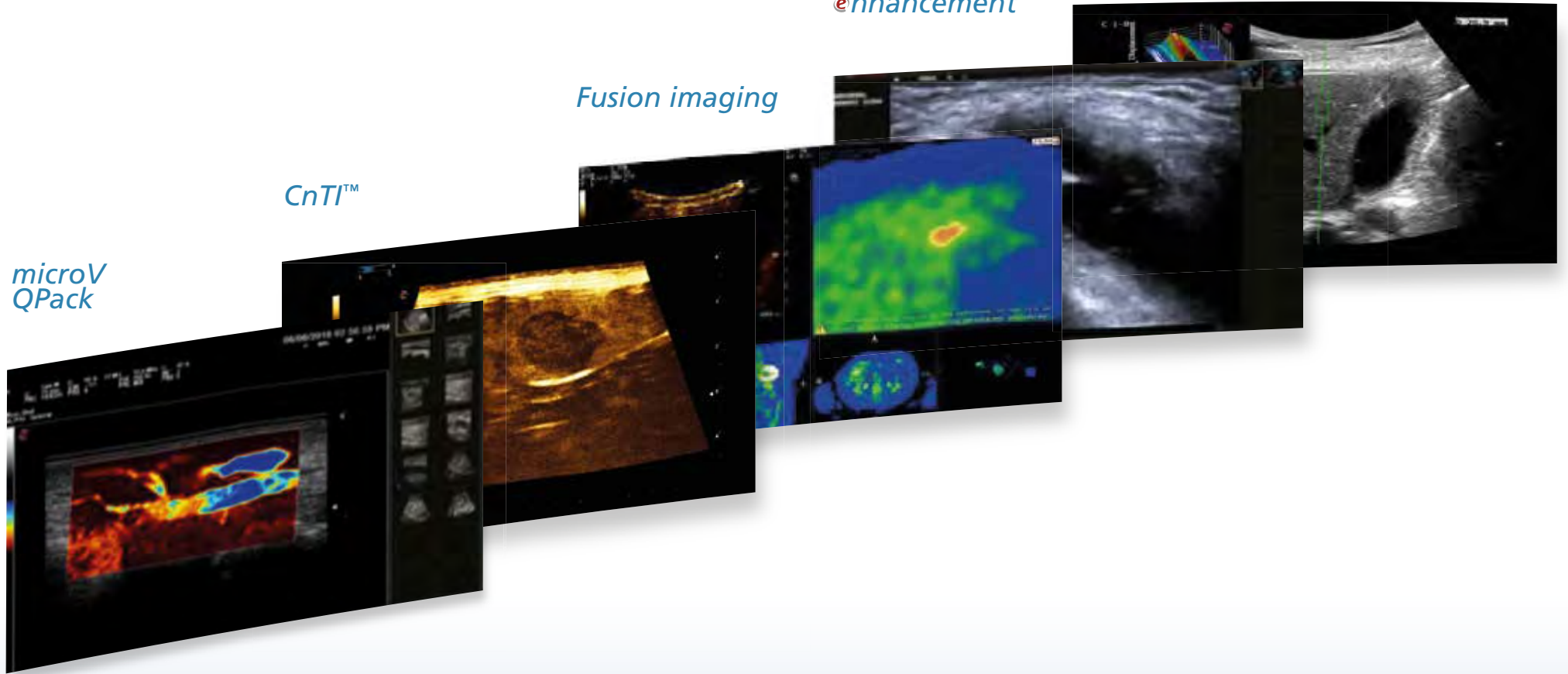
*microV
QPack*

CnTI™

Fusion imaging

*Needle
enhancement*

ElaXto



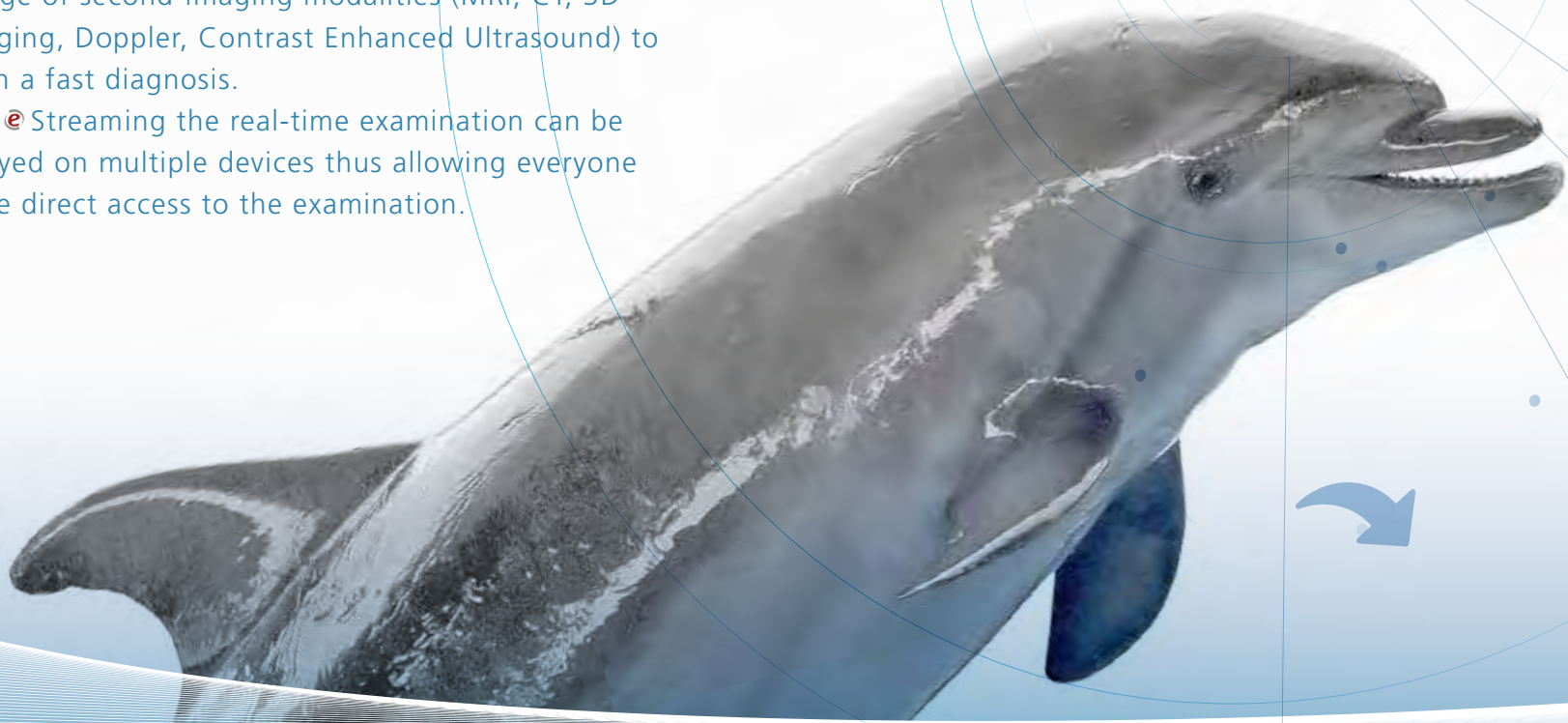
Advanced approach and technology

NEVER STOP ELEVATING YOUR VET EXPERIENCE

esaote

Broad **CONNECTIVITY OPTIONS**

The worldwide medical imaging community has entered a new era of communication opportunities. Today with the multi-modality tool it is possible to combine real-time ultrasound imaging with a wide range of second-imaging modalities (MRI, CT, 3D imaging, Doppler, Contrast Enhanced Ultrasound) to reach a fast diagnosis. With **e**Streaming the real-time examination can be displayed on multiple devices thus allowing everyone to have direct access to the examination.

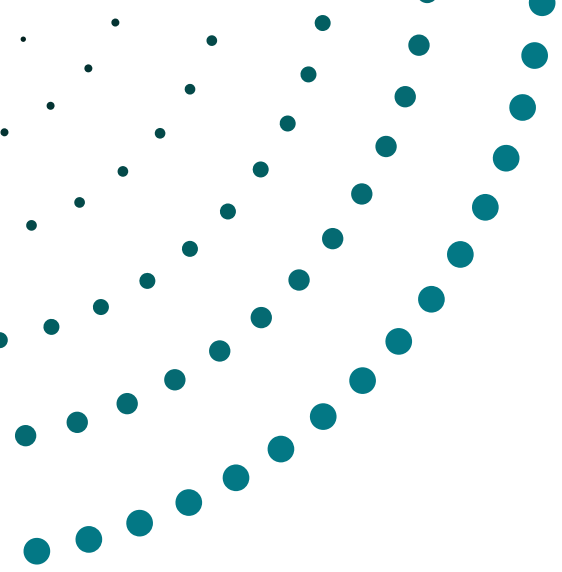




- **DICOM** connectivity (including Q/R)
- **Multi-modality** archive
- **Wireless** connectivity
- **MyLab™ Desk evo** viewer
- **MyLab™ Tablet**

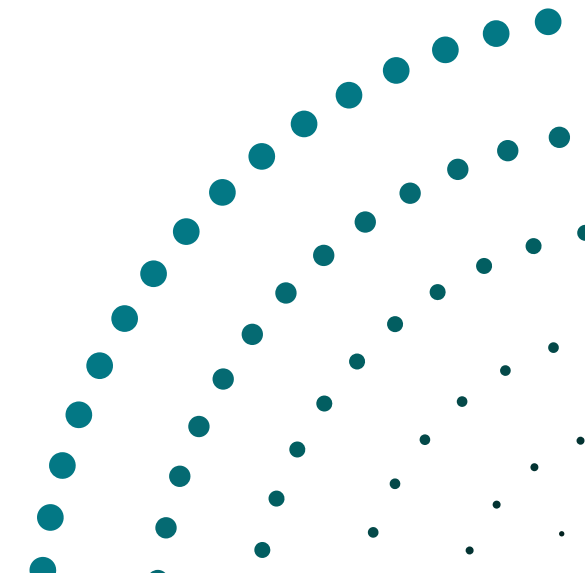
NEVER STOP ELEVATING YOUR VET EXPERIENCE





AE TECHNOLOGY SRL

Via Vittorio Veneto, 12
20091 Bresso (MI)
TEL +39 02 35988192
www.aetechno.com
info@aetechno.com



MyLab™ Tringa VET

High-Tech at your Fingertips



NEVER STOP ELEVATING YOUR VET EXPERIENCE.

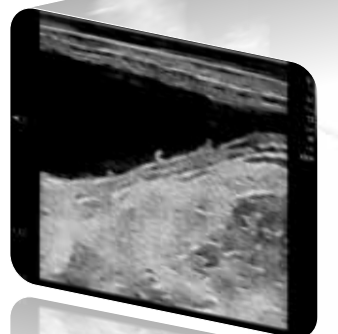
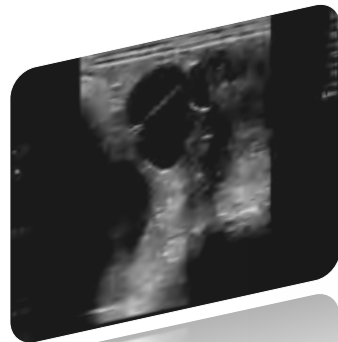
esaote

A compact, reliable and comprehensive **ultra-portable system** weighing just **100 g (0,22 lb)***.

The MyLab™ Tringa VET is the perfect solution for equine and bovine repro imaging to **reach a straightforward diagnosis**.

Connect it with your **portable device** and start scanning.

* weight referred to cable + probe only




-  **Dedicated VET SW:** species and application selection with advanced measurements
-  **Remote Control**
-  **Compatible with Android® devices**
-  **Long length operating time**
-  **Intuitive user interface**



160000323MA Ver.02

CE Guangdong Youkey Medical Co., Ltd.
Unit 601, Block B, Building 1, B1 District, Hantian Technology City, Nanhai District, Foshan City, Guang Dong, China

 Distributed by Esaote S.p.A - sole-shareholder company
Via Enrico Melen 77, 16152 Genova, ITALY, Tel. +39 010 6547 1, Fax +39 010 6547 275, info@esaote.com

MyLab is a trademark of Esaote spa.

Android® is a registered trademark of Google.

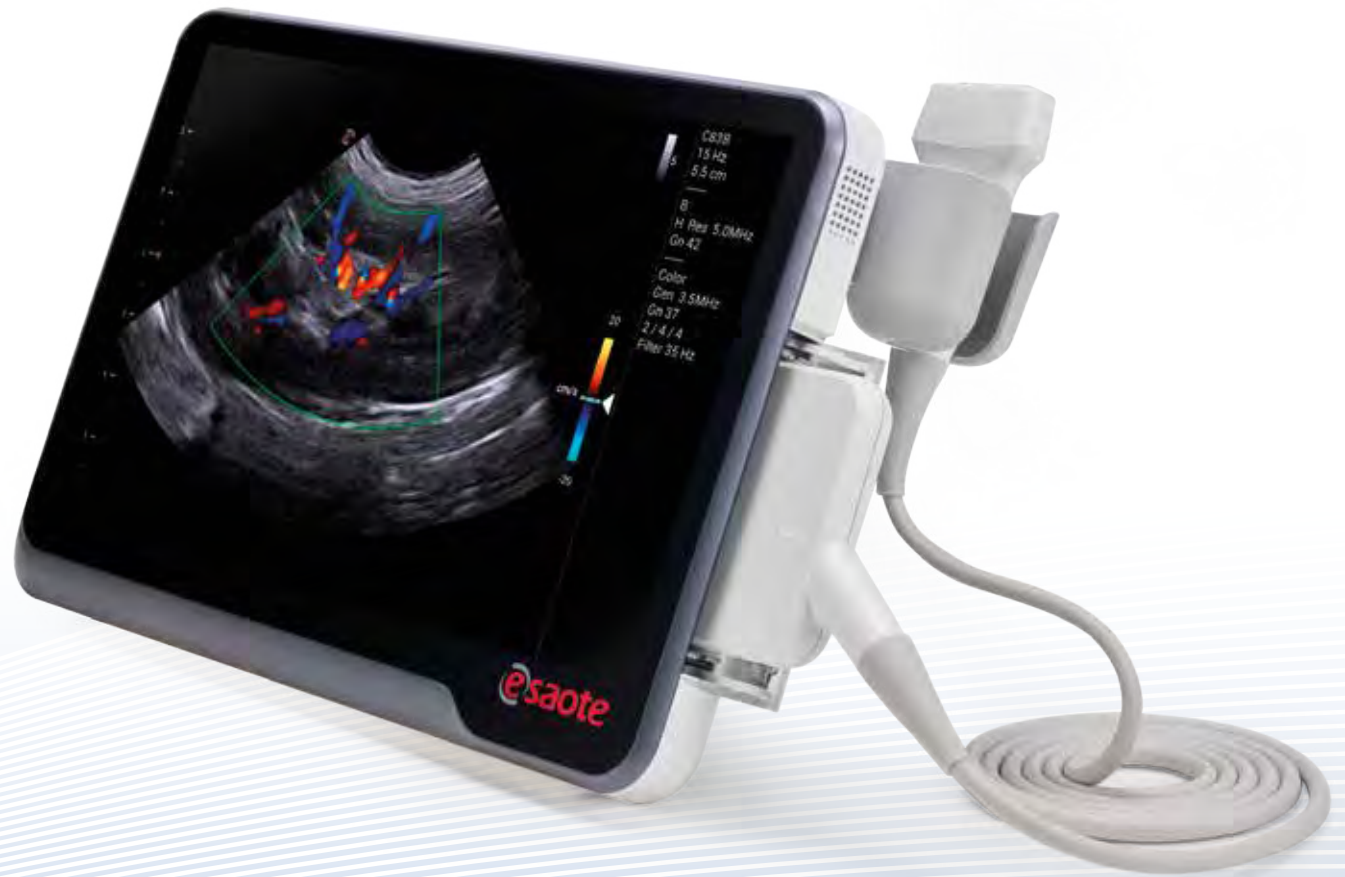
Technology and features are system/configuration dependent. Specifications subject to change without notice. Information might refer to products or modalities not yet approved in all countries. Product images are for illustrative purposes only. For further details, please contact your Esaote sales representative.



Please visit us online for more information

MyLab™ X1 VET

**One way
to scan**

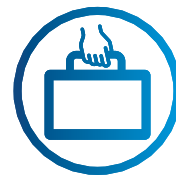


NEVER STOP ELEVATING YOUR VET EXPERIENCE.

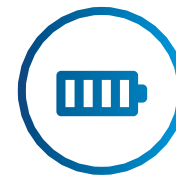
esaote

Wherever you go, whatever you need.

With **MyLab™X1VET**, designed for freelancers, farm animal Vets, emergency rooms and hospital settings, smart diagnosis is now possible.



Ultraportable and Easy-to-carry



Long-lasting battery



Gesture-driven touchscreen



Wide connectivity options



Fast reaction times



Easy-to-clean



VET dedicated software – Advanced measurements

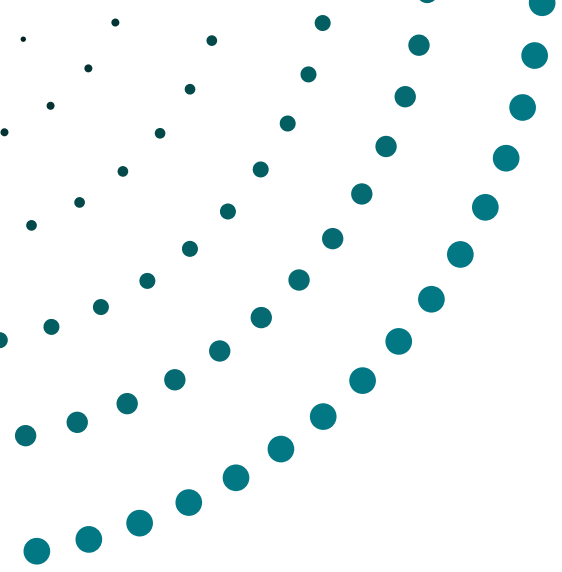


Eco-Friendly and sustainable



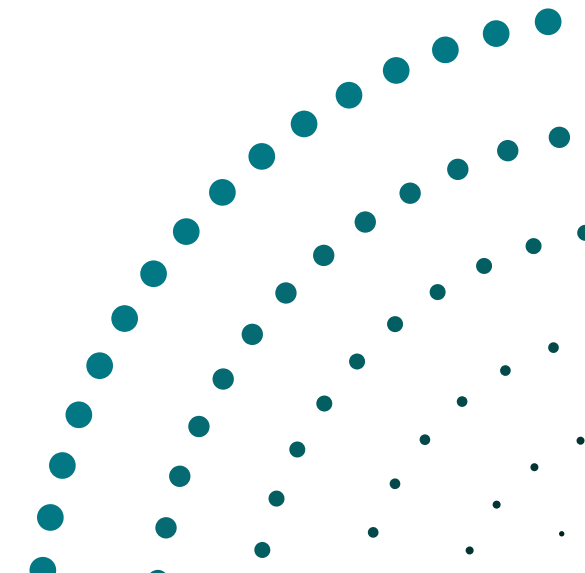
An ideal solution for **every clinical application**





AE TECHNOLOGY SRL

Via Vittorio Veneto, 12
20091 Bresso (MI)
TEL +39 02 35988192
www.aetechno.com
info@aetechno.com



MyLabTMSigma VET

So Fast,
So Easy



NEVER STOP ELEVATING YOUR VET EXPERIENCE.

esaote
veterinary

Smart and portable solution to allow ultrasound image whenever required



Easy to carry

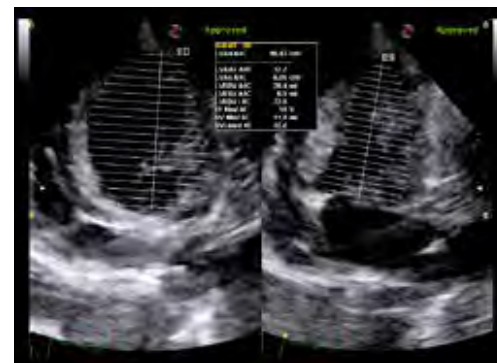
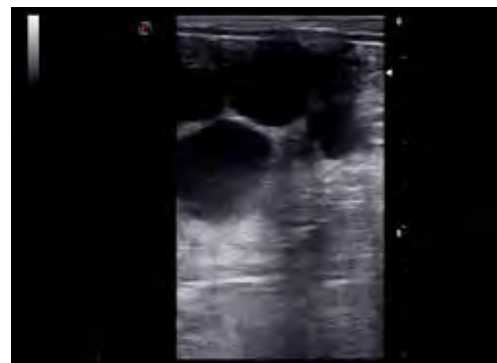
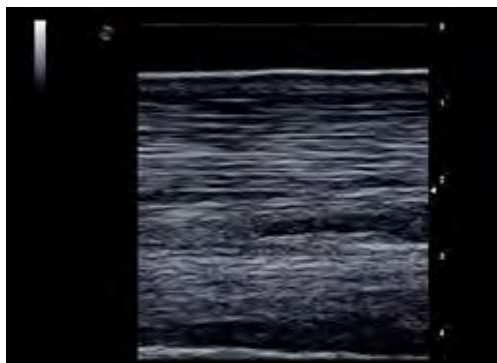
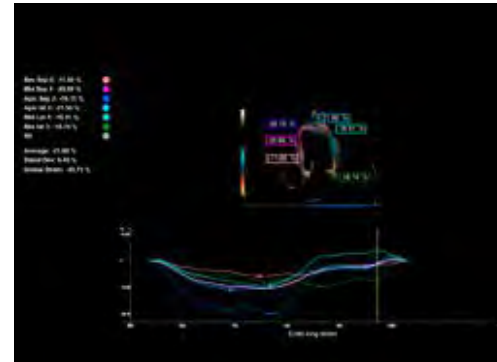
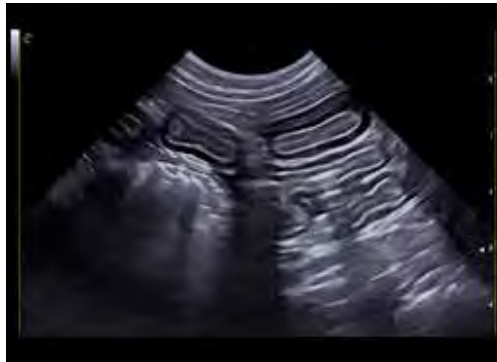


Dedicated VET software and probes

*from stand-by mode



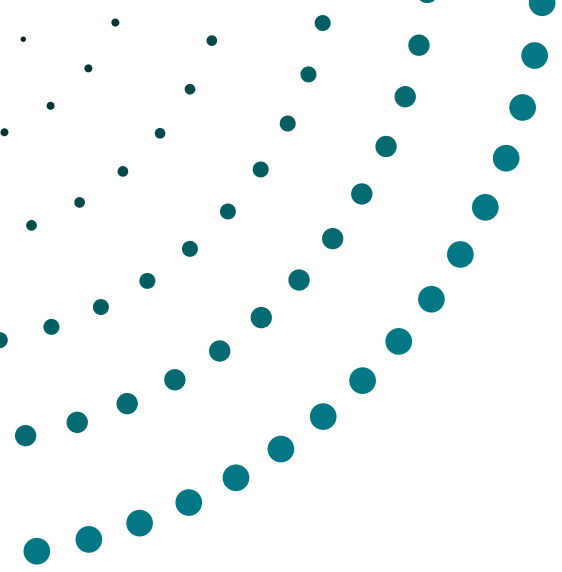
The best image quality in the shortest time



Single-probe approach - with just one probe you can make a complete medical imaging examination and simplify your everyday practice

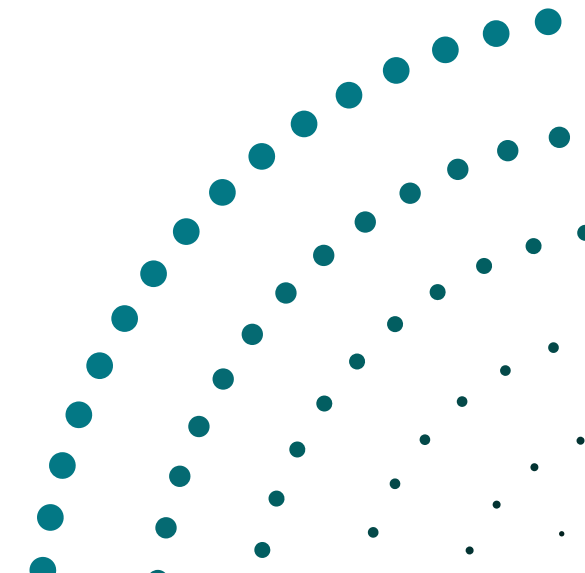
XStrain™ and AutoEF - high sensitivity and spatial resolution hemodynamic evaluation for tissue perfusion





AE TECHNOLOGY SRL

Via Vittorio Veneto, 12
20091 Bresso (MI)
TEL +39 02 35988192
www.aetechno.com
info@aetechno.com



MyLabTMOmega VET

Top Performance, Compact Design



NEVER STOP ELEVATING YOUR VET EXPERIENCE.

esaote
veterinary



Dedicated VET software and probes



Two socket connectors



Large dedicated VET probe portfolio - up to 22 MHz



Fast and Easy



Highly responsive capacitive touchscreen



Multimodality archive



Complete advanced clinical tools



Extended connectivity



Wireless option



Pivoting 15.6" monitor



Windows® 10



MyLab™ Tablet



On-board DVD



DICOM connectivity (including Query/Retrieve)



@Streaming

Advanced tools to help you in everyday clinical practice

Esaote's **MyLab™ OmegaVET** is the premium portable system which is easy to carry with you everywhere and is designed to reach the highest level of diagnostic efficiency.



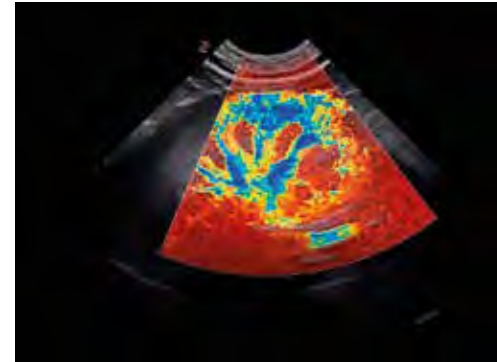
Image quality straightway



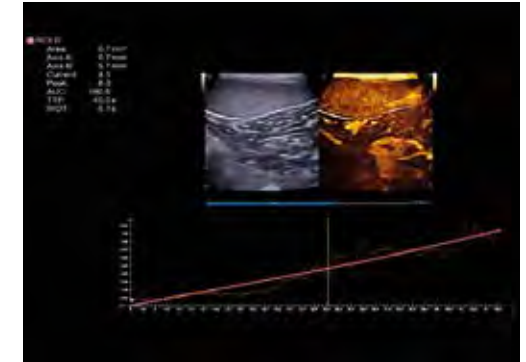
AutoAdjust - automatic adjustment of Imaging, CFM and Doppler parameters at the press of a button



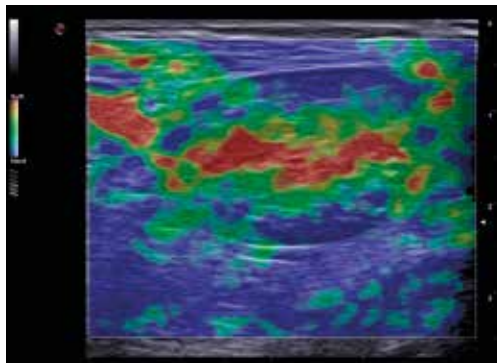
XView+ - speckle artifacts reduction



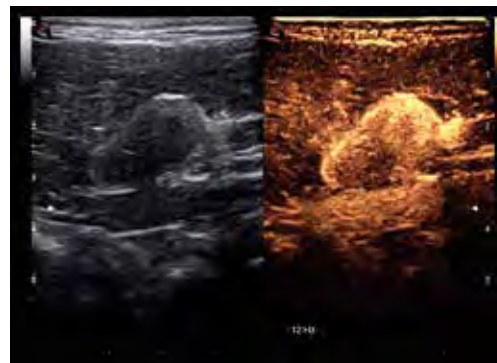
microV - high sensitivity and spatial resolution hemodynamic evaluation for tissue perfusion



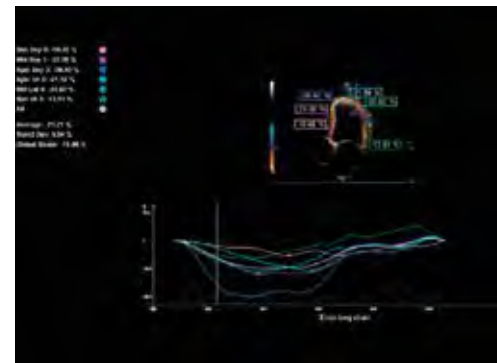
QPack - multimodality quantification tool for CnTI™, Color & Power Doppler



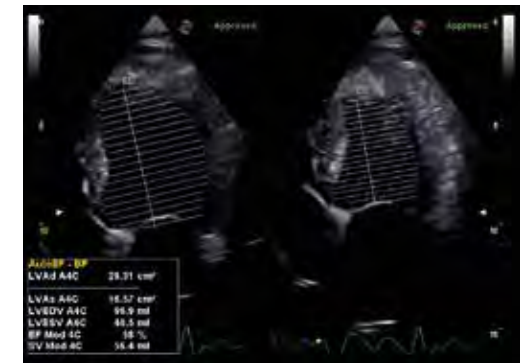
ElaXto - real-time non-invasive assessment of tissue elasticity



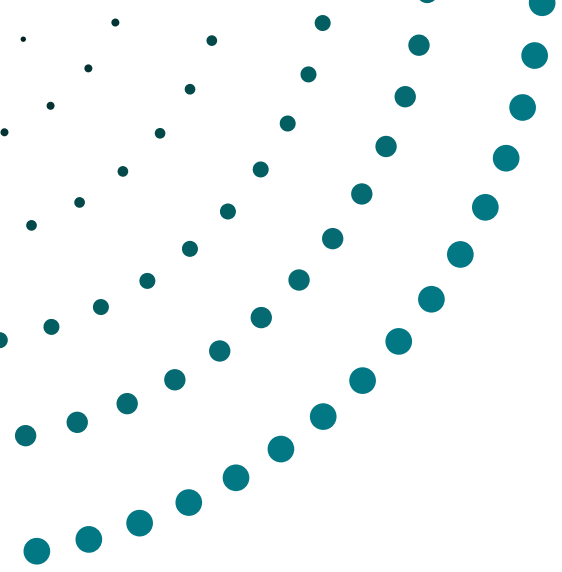
CnTI™ - advanced technology for Contrast Enhanced Ultrasound (CEUS) imaging



XStrain™ - endocardial velocity quantification & heart deformation detection

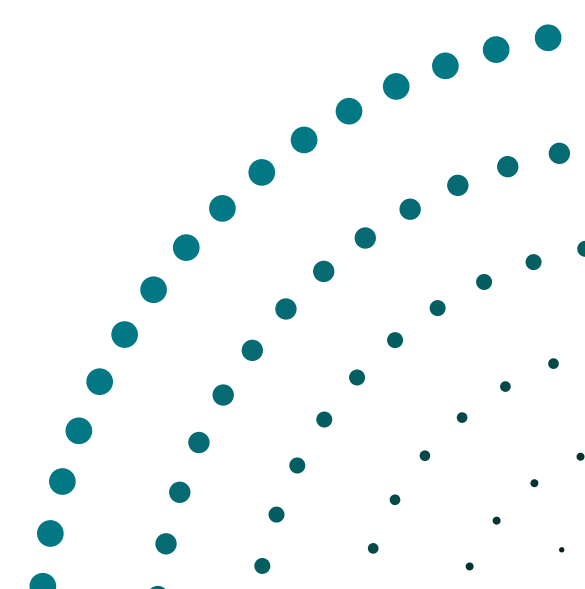


Zero-click AutoEF - automatic ejection fraction computation



AE TECHNOLOGY SRL

Via Vittorio Veneto, 12
20091 Bresso (MI)
TEL +39 02 35988192
www.aetechno.com
info@aetechno.com





MYLAB™ VET PRODUCT LINE

MyLab™ X7VET **THE PERFECT CHOICE**

Extremely intuitive and user-friendly veterinary interface offering outstanding image quality which adds extra value to your exams.

LED monitor with IPS technology allowing you to capture every single detail.



NEVER STOP ELEVATING YOUR VET EXPERIENCE.



MyLabX7TM VET



Dedicated VET software and probes



Windows[®] 10



Quick start-up



Full-screen visualization



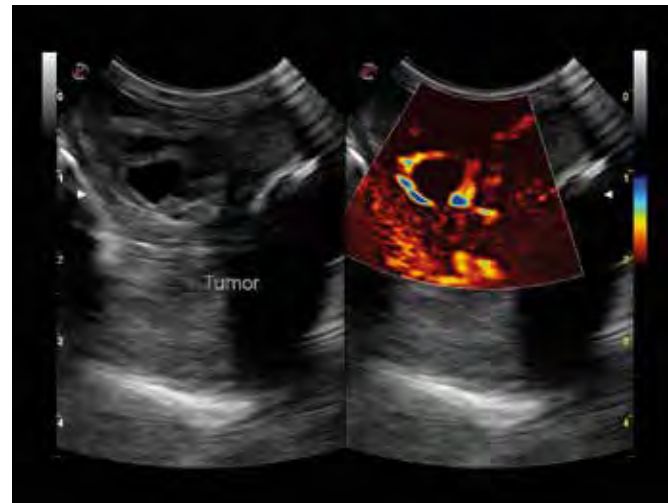
Highly responsive capacitive touchscreen



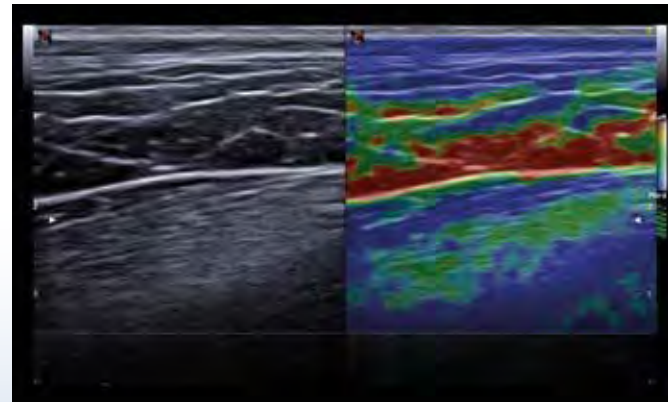
Large probe portfolio



Microvascularization detection with microV



Dog - Testis tumor - microV



Dog - Quadriceps femoris - ElaXto

- **22 MHz probe** with high-resolution images
- **Zero-click EF** - automatic ejection fraction computation
- **XStrainTM** - endocardial velocity quantification & heart deformation detection
- **ElaXto** - non-invasive assessment of tissue elasticity
- **CnTITM** - advanced technology for Contrast Enhanced Ultrasound (CEUS) imaging
- **QPack** - multimodality quantification tool for CnTITM, Color & Power Doppler
- **Extensive connectivity** - advanced allow sharing of ultrasound exams with others even on tablets and portable devices

16000181MA Ver.02

Esaote S.p.A. - sole-shareholder company
Via Enrico Melen 77, 16152 Genova, ITALY, Tel. +39 010 6547 1, Fax +39 010 6547 275, info@esaote.com

Windows[®] is a registered trademark of Microsoft Corporation. MyLab is a trademark of Esaote spa.
Technology and features are system/configuration dependent. Specifications subject to change without notice. Information might refer to products or modalities not yet approved in all countries.
Product images are for illustrative purposes only. For further details, please contact your Esaote sales representative.

MyLab™X75 VET

The Ideal Partner

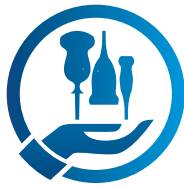


NEVER STOP ELEVATING YOUR VET EXPERIENCE.

esaote
veterinary

Light and silent, powered by smart ergonomics

MyLab™X75VET is your perfect partner in acquiring high-quality ultrasound images with sharp precision in all applications.



Complete probes portfolio



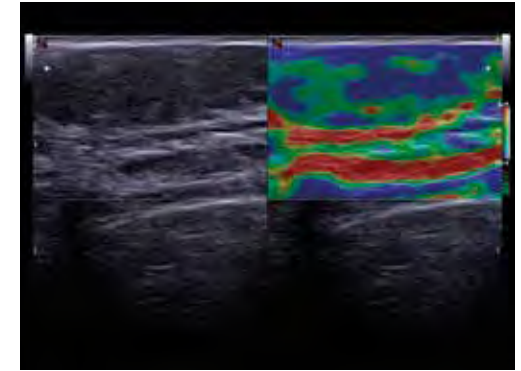
Dedicated VET
software and probes



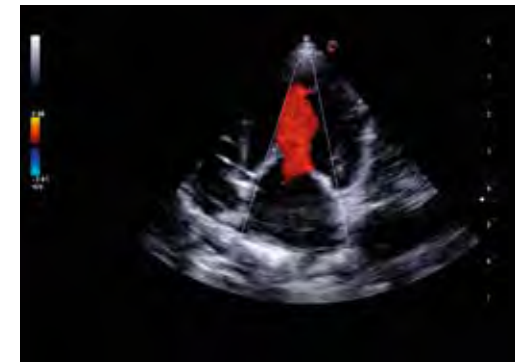
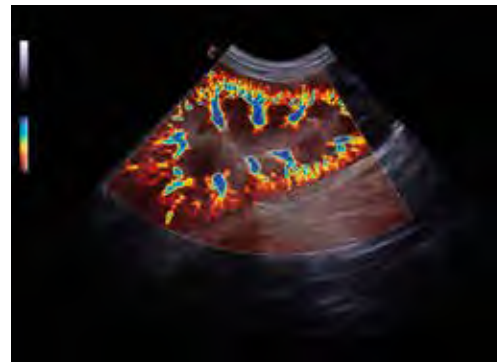
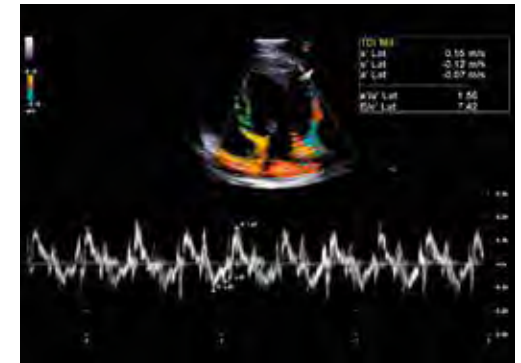
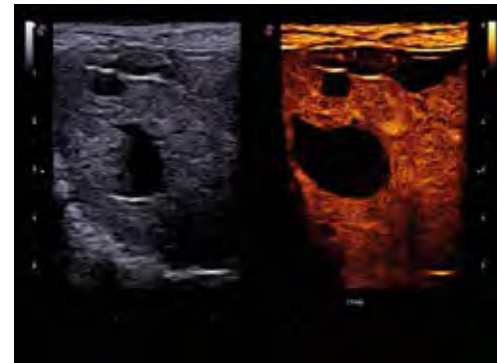
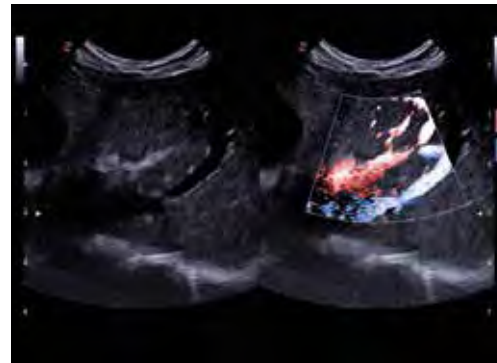
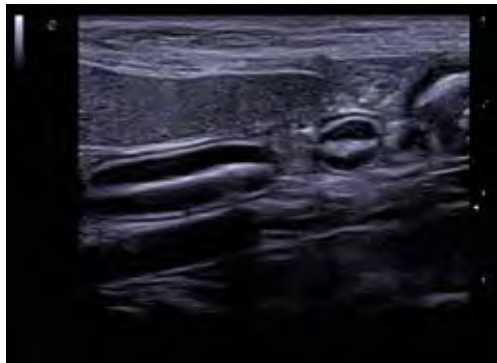


Detailed imaging and advanced tools

Follow Up & Multimodality - to compare any DICOM modality in real-time



ElaXto - real-time non-invasive assessment of tissue elasticity



Automatic and immediate **B-Mode** and **Color Mode** Imaging optimization at the press of a button

XFlow and **microV** to enhance tissue vascularization

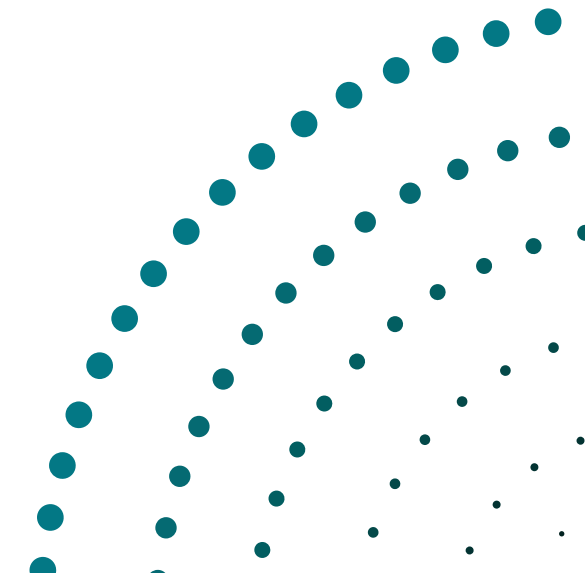
CnTI™ and **QPack** to perform contrast examination with contrast agent quantification

First-class cardio image and advanced measurements package



AE TECHNOLOGY SRL

Via Vittorio Veneto, 12
20091 Bresso (MI)
TEL +39 02 35988192
www.aetechno.com
info@aetechno.com



MyLabTMX8 VET

Designed
To Be Unique



NEVER STOP ELEVATING YOUR VET EXPERIENCE.

esaote
veterinary

MyLab™X8VET

MyLab™X8VET represents an outstanding source of innovation and technology, designed to accelerate your workflow.

MyLab™X8VET offers: an LCD monitor with the latest technology, a smart stand-by function and a fast boot time, Windows® 10 O.S., zero-click automation functions, and cutting-edge ergonomics.

Achieve infinite results with its highly intuitive user interface and advanced clinical tools, tailored to suit your needs.

The MyLab™X8VET system sets a standard of high performance, offering a brand new ultrasound experience.



Windows® 10



Large 21" monitor

LCD monitor with the latest technology, ensuring the best enhancement of the details and a full-screen mode.



Transducer connectors

Up to 5 transducer connectors enabling fast probe switch to adapt to the most demanding clinical environments.

Attain immediate results and exploit all features of the VET dedicated platform

MyLab™X8VET integrates the latest technologies, delivering a high level of image quality without compromising workflow or efficiency.

MyLab™X8VET enables you to accelerate your workflow by setting customizable options.



Tablet-like touchscreen

Widescreen multi-function tablet-like touchscreen for uncompromising ease of use.



@asyMode & @asyColor

“One-Touch” image optimization through intelligent real-time algorithms.



Fast system boot up

Fast system boot time from standby, for effective performance at the point of care.



Battery on board

Battery on board* to enable an autonomous cartbase.



Zero-click functions

Zero-click automation functions provide very fast interface usage and simplify complex procedures in different applications.

*optional

Ergonomics and comfort without compromise



Based on a decade of experience, **MyLab™X8VET** delivers outstanding ergonomics and comfort in daily practice.

With creative solutions for both hardware and software, clinicians are provided with innovative tools.

- Simplified control panel
- Large touchscreen with tablet gesture also for displaying recorded images
- Intelligent real-time algorithms **e**asyMode and **e**asyColor to simplify the ultrasound image optimisation
- Smart automation functions like **e**Doppler and **e**Scan to increase the examination time efficiency



Limitless connectivity



MyLab™X8VET has been equipped with innovative connectivity tools to support remote connection and image sharing to meet today's challenges.

- Follow-up compares any second-modality
- DICOM images in real-time
- @Streaming safely shares real-time scanning activities with selected viewers
- MyLab™Tablet exports the full dataset to any tablet device following the examination
- MyLab™Desk enables the review of previous examinations



MyLabRemote exclusive function is the perfect tool to limit any physical contact with the ultrasound device through the duplication of the control panel on various mobile devices.

Large probe portfolio

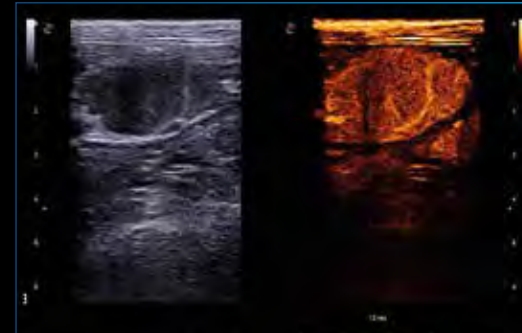


Esaote iQProbes meet gold quality standards, offering state-of-the-art technology for a large range of applications:

- Superb imaging outcome
- Lightweight, appleprobe ergonomics
- Reduced musculoskeletal strain of up to 70%
- Increased confidence



microV - fast non-invasive hemodynamic evaluation with high sensitivity for lesion characterization



CnTI™ - advanced technology for Contrast Enhanced Ultrasound (CEUS) imaging

MyLab™ X90 VET

Empowering
Veterinary Care



NEVER STOP ELEVATING YOUR VET EXPERIENCE.

esaote
veterinary

Experience Excellence in Ultrasound

A simple detail can **make the difference** in treating your patients. With MyLab™X90VET, its premium ultrasound system, Esaote is committed now more than ever to providing you with the **ultimate technologies**, and to delivering outstanding image quality and **advanced clinical solutions**.

Bridging the clinical information and an **A.I.-driven workflow** for the first time, MyLab™X90VET will be your first experience of an ultrasound device with Intelligent Imaging.



discover more on
MyLab™X90VET
technologies and
architecture



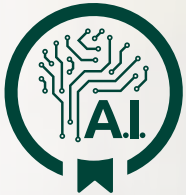
ULTIMATE
DESIGN



XCRYSTAL
TECHNOLOGY



VET DEDICATED
SW AND PROBES



AUGMENTED
INSIGHT™



CLINICAL
EXPERIENCE



@Led monitor

Top-class medical imaging visualization

Collaborating with **Barco** to equip an exclusive **@Led monitor**.

- 23.8" Full HD High Dynamic Range Monitor
- Dual-Layer technology
- Contrast resolution ratio × 40*
- Higher sensitivity in brightness and color
- Long lifespan and stability



*compared to conventional LCD technology

High-tech design, maximum comfort

Optimal working environment

- Exclusive **light sensor** for automatic optimization of brightness to the scanning environment.
- **Opti-Light** feature for real-time lighting, providing invaluable comfort in everyday use, according to the light conditions in the room.



New workflow gestures

Intuitive real-time control of several parameters such as **depth, zoom, sample gate, replay of cineloop** or even certain measurements using only your fingers.



Customizable workstation

The **high-quality articulating arm** and its friction mechanism offer the option of lifting the monitor easily and keeping it in the optimum position chosen, for scanning either standing up or sitting down.



XCrystal Technology, micro-slice imaging

Esaote-developed **XCrystal technology** dramatically increases **sensitivity** and **penetration**, to provide sharper images and **homogeneity**.

As a historic specialist in high-frequency probe manufacturing, Esaote offers a broad portfolio of transducers to cover all clinical needs and patient sizes, giving an **unparalleled level** of detail imaging.

The **LMX 4-20**, Esaote's brand-new **HD Single Crystal probe**, combined with ClearWave Architecture, benefits of very wide bandwidth and operating frequencies up to 25 MHz. It reveals unprecedented clarity in the minutest details with no compromise in the deeper area.

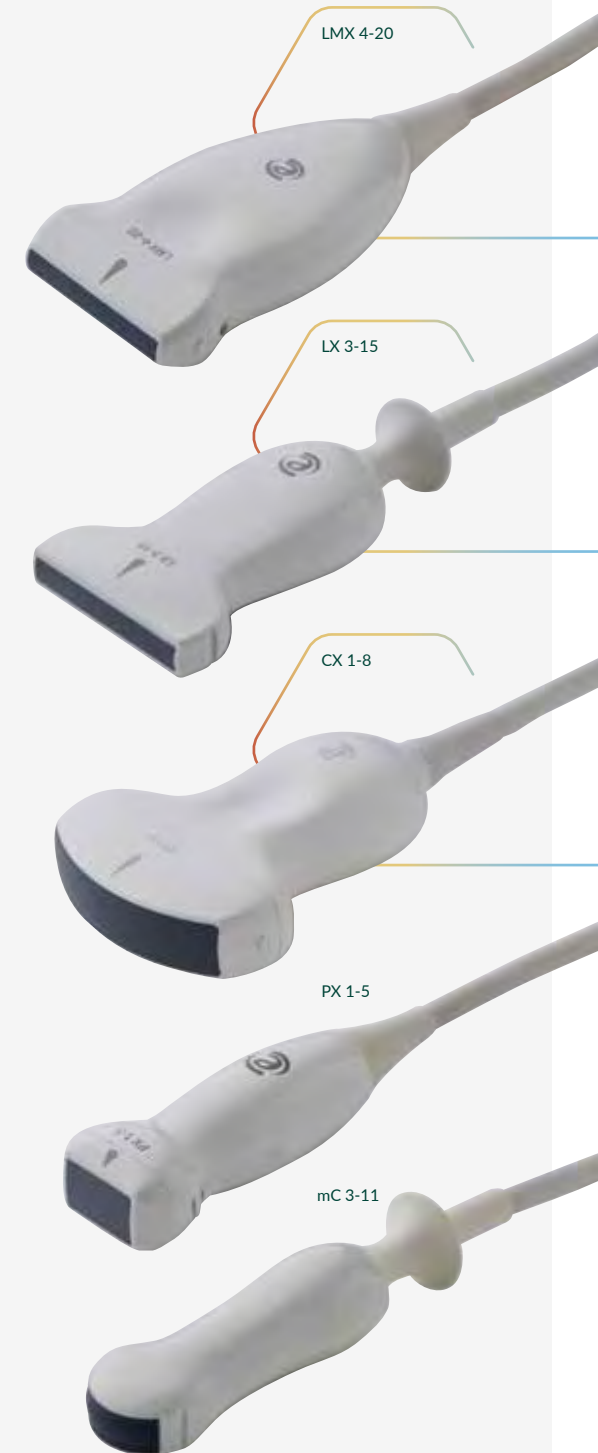


Conventional probe technology

XCrystal Technology



- Lens shape
- Thermal drain mechanism
- HD elements/multi-layer matrix structure

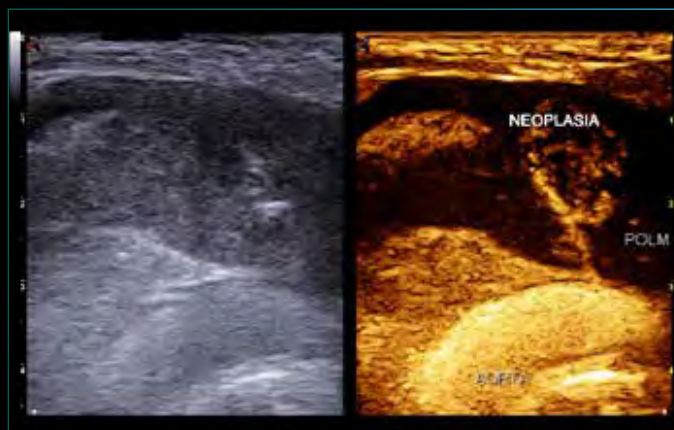


Superb quality and impressive performance

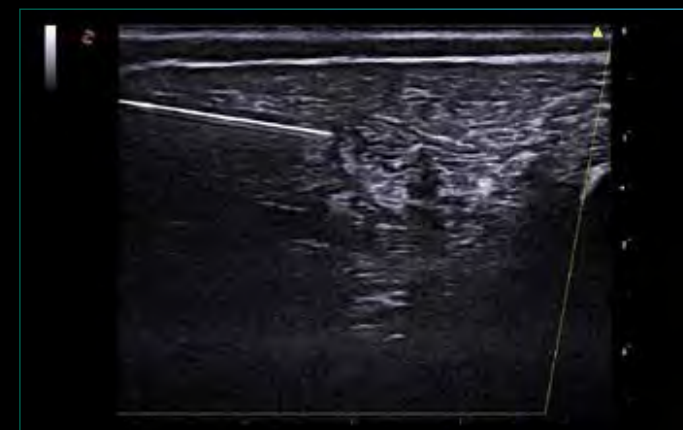
To leverage the imaging experience, Esaote supports homogeneous first-class-quality images through a wide selection of probes, enhancing details with sharpness and clarity in all species.



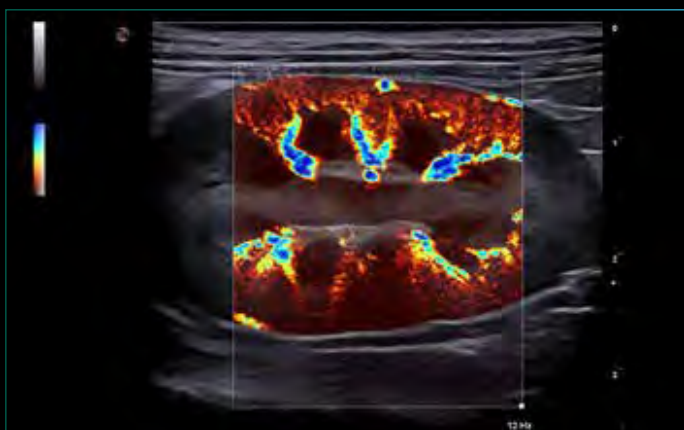
XView Clear – gives a superior ultrasound imaging quality that exponentially increases diagnostic confidence and image readability.



CnTI™ Clear – increases performance via considerable persistency with information for tissue microperfusion.



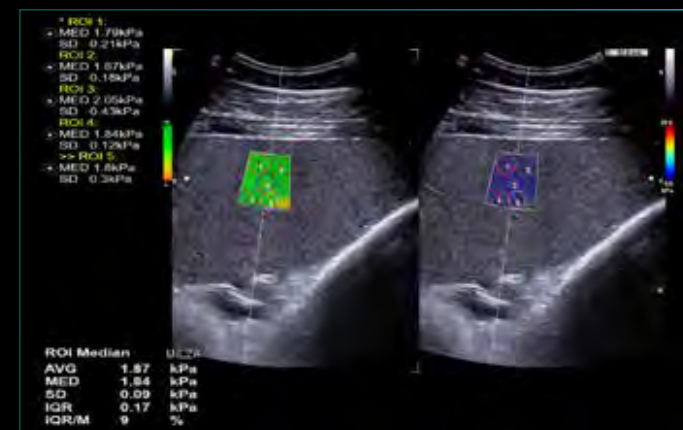
Needle @nhancement – increases needle brightness, ameliorating the accuracy of the intervention procedure.



microV – provides an outstanding visualization of the lowest flows with high frame rate and enhanced sensitivity.



High Freq single crystal – reveals unprecedented clarity in the minutest details without compromising the deeper areas.



QElaXto 2D – automatically summarizes real-time stiffness quantification in a report, to support diagnosis and easy follow-up.

ROI	Median	MEAN
AVG	1.87	kPa
MED	1.84	kPa
SD	0.09	kPa
IQR	0.17	kPa
IQR/M	9	%

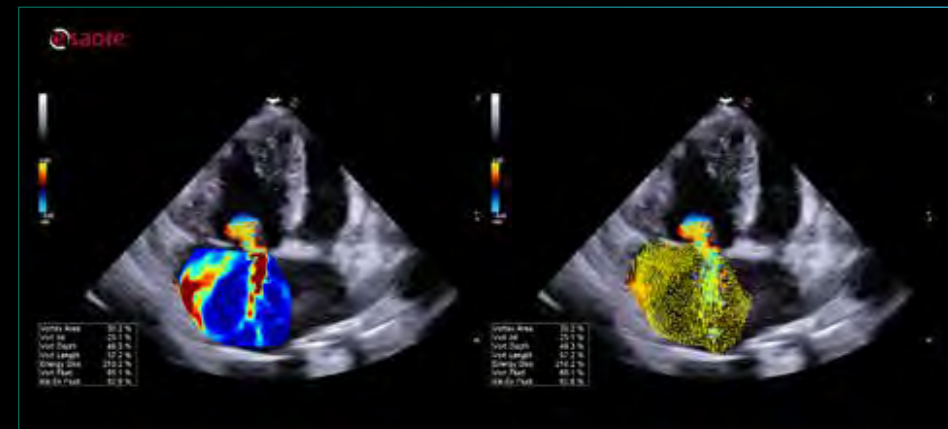
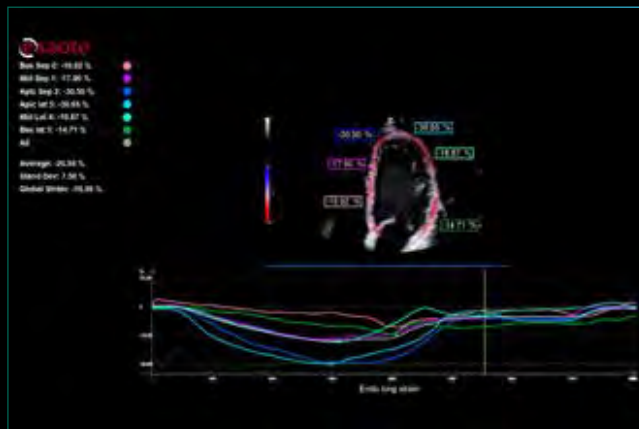
Augmented Insight™



Based on data-driven machine learning, Augmented Insight™ is designed to simplify the workflow in repetitive gestures and complex procedures.

MyLab™X90VET covers a 360° shared-service solution, embedding new workflow powered by A.I. in cardio applications to increase speed and accuracy in standard measurements.

A full package of zero-click tools is included, to facilitate the quantification of cardiac function, such as **AutoEF**, **XStrain™** and **HyperDoppler**.



XStrain™ – enables zero-click detection of the endocardial border profiles in the left ventricle and provides strain assessment of the right ventricle.

AutoEF – offers an automatic A.I.-driven contouring of the left ventricle in 4 and 2 chambers, to assess the ejection fraction.

HyperDoppler – allows to investigate intracardial flows for research purposes.

Versatile connectivity

Supported by a powerful architecture and high-tech components, MyLab™X90VET embraces the new trends in term of medical data streams with a complete offer of connectivity tools, such as **MyLab™Tablet**, **MyLabRemote** and **MyLab™Desk**.

Either for education purposes or collaborative examinations, **@Streaming** technology offers real-time streaming of ultrasound, together with picture-in-picture camera on your tablet, phone or laptop.



Customer Care



**3-year
service
coverage**

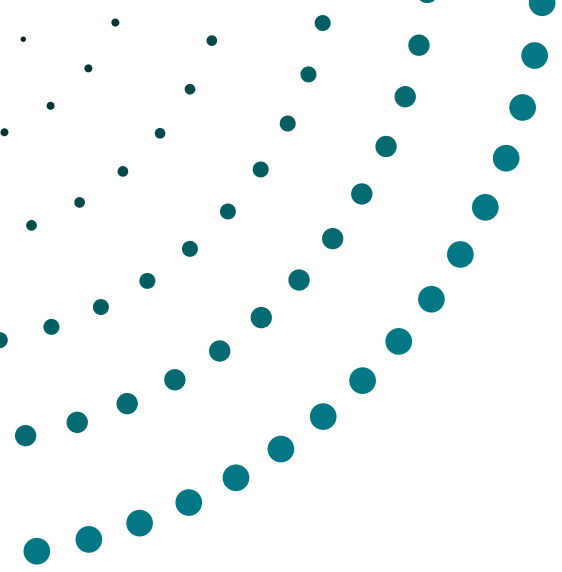


REMOTE
TECHNICAL
SUPPORT



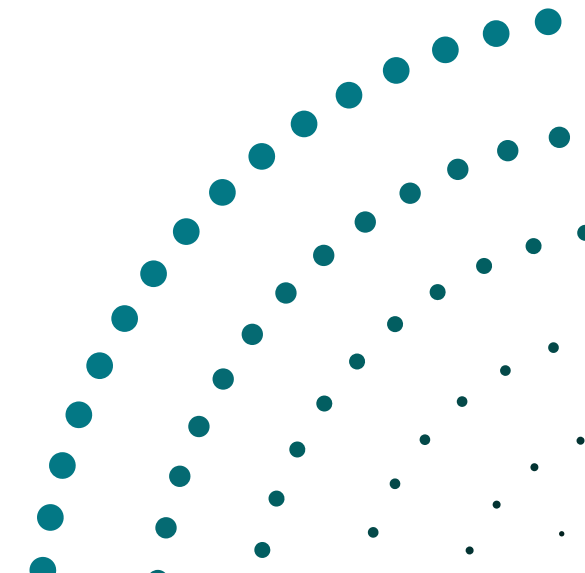
PROBE
COVERAGE

Conditions for service coverage may vary depending on your country.



AE TECHNOLOGY SRL

Via Vittorio Veneto, 12
20091 Bresso (MI)
TEL +39 02 35988192
www.aetechno.com
info@aetechno.com



Magnifico
vet

Magnify your Veterinary practice



NEVER STOP ELEVATING YOUR VET EXPERIENCE.

eSaote

ADDING A NEW DIMENSION TO VET MRI



This is
Magnifico
vet

The next generation of veterinary MRI from Esaote

Years of experience built into the design

At Esaote, customer needs are always at the forefront of everything we do. The Magnifico Vet is a customer-driven MRI system with technology developed to better serve user needs for improved diagnostic efficacy and workflow.

In veterinary medicine, MRI is about outcome-based services that address specific clinical needs while satisfying operational and financial demands.

Over time, advancements in MRI data acquisition have resulted in substantial improvements in image quality and reductions in scan times.

These benefits combined embody the value Magnifico Vet brings to veterinary practices. With low operating costs, no cryogenics, state-of-the-art technology, and unparalleled diagnostic quality, the Magnifico Vet is the veterinary imaging solution the market has been waiting for.

Broaden your perspective

Thanks to the Esaote MRI technology, veterinarians can now broaden their perspective without compromising on image quality and workflow productivity. The Magnifico Vet open system is the right choice for veterinarians looking for new ways to expand their service offerings.



Dedicated to VET applications



Dedicated design and user interface

From the ergonomic interface and simple animal positioning to the data input and patient retrieval, scanning on an MRI has never been easier.

Vet imaging protocols that speak your language

Specific scan protocols are the key to good image quality. Magnifico Vet comes with a comprehensive library of protocols, developed with vet luminaries, dedicated to animals of diverse types and sizes.

Post-surgical imaging and microchips

The Magnifico Vet offers a special Metal Artifact Reduction (MAR) application, an optimal solution for post-surgical imaging or when microchips are present. Compared to traditional MRI, MAR sequences greatly reduce metal artifact and offer high-quality diagnostics.

Esaote, we are veterinary MRI

Over 20 years of veterinary MRI

Esaote has collaborated with private veterinary clinics and university sites for over 20 years. Feedback from our key customers allows Esaote R&D to constantly improve system performance, helping us continuously shape the future of veterinary MRI.

Your partner for training and education

Since the first international educational course in 2004, Esaote has proudly maintained its legacy and commitment to its veterinary customers. The company organizes periodic international conferences and a series of free online lectures and scientific webinars led by renowned speakers.

Esaote also offers tutorials produced in collaboration with veterinary KOLs on vet MRI scanning operations, illustrating the procedures that should be followed to scan each anatomical area.



Esaote offers its customers high-quality support in veterinary MRI thanks to dedicated application specialists that understand veterinary terminology.

Educational needs may grow over time, so our vast network of MRI specialists can help you connect with like-minded veterinarians.



Webinars



**Video
tutorials**



MRI meeting



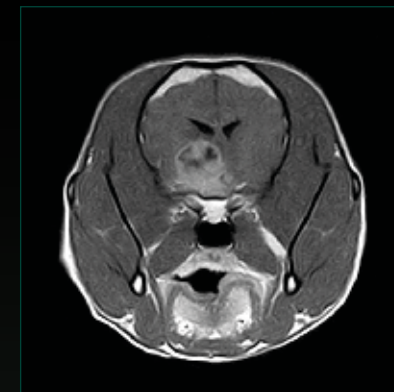
Network

You don't need anything else

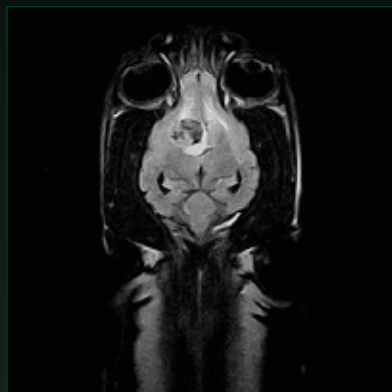
Optimized subsystem components and fast computing in combination with advanced software algorithms for data acquisition and elaboration like Speed Up technology and TR Reduction, ensures excellent and consistent quality and short scan times.



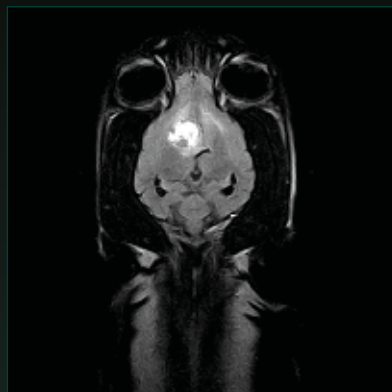
Brain
Transverse Spin Echo T1



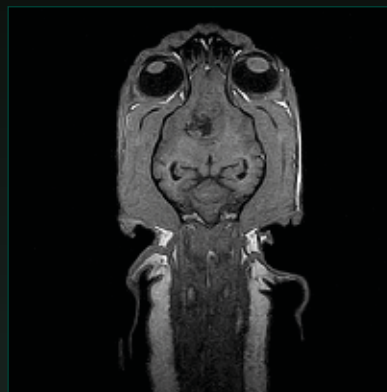
Brain Transverse Spin Echo T1
post contrast



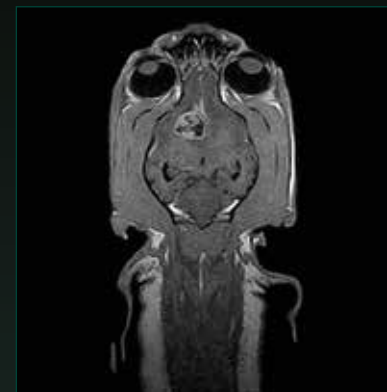
Brain
Dorsal Fast Flair



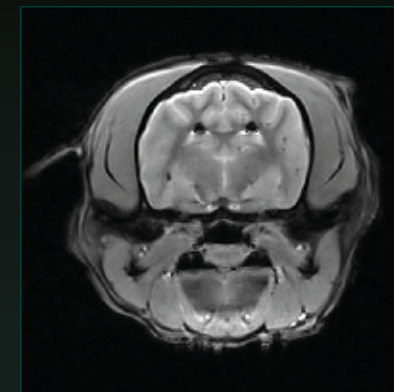
Brain
Dorsal Fast Flair post contrast



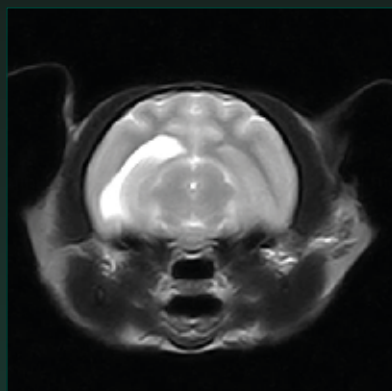
Brain
Dorsal 3D SST1



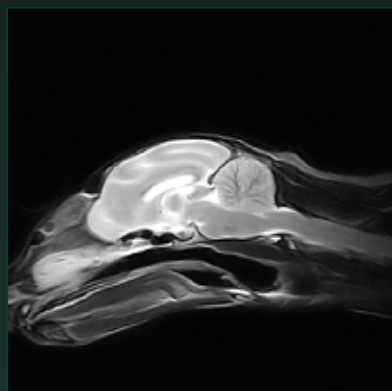
Brain
Dorsal 3D SST1 post contrast



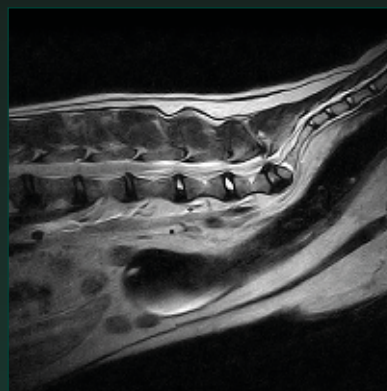
Brain
Transverse GE T2*



Brain
Transverse FSE T2



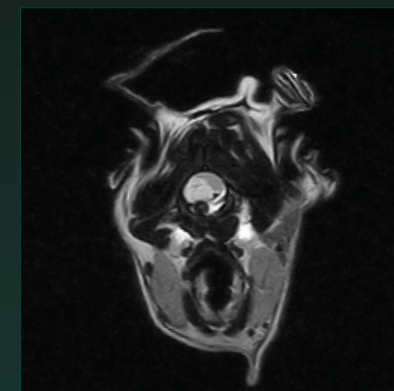
Brain
Sagittal FSE T2



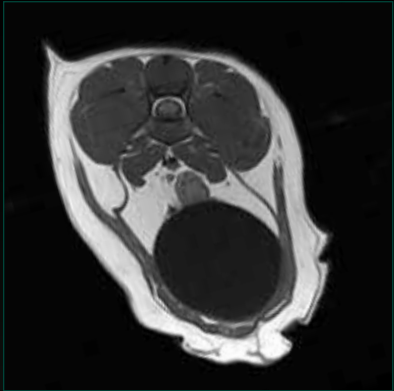
Lumbosacral Spine
Sagittal FSE T2



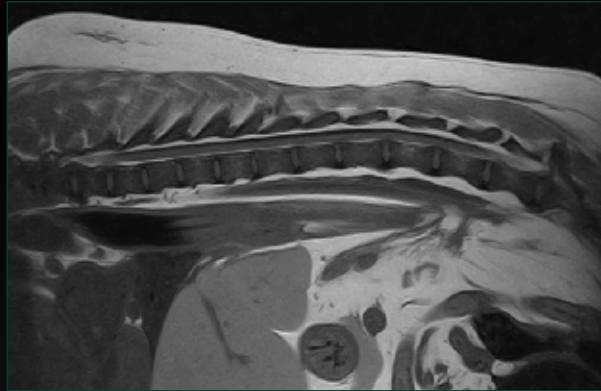
Lumbosacral Spine
Sagittal Spin Echo T1



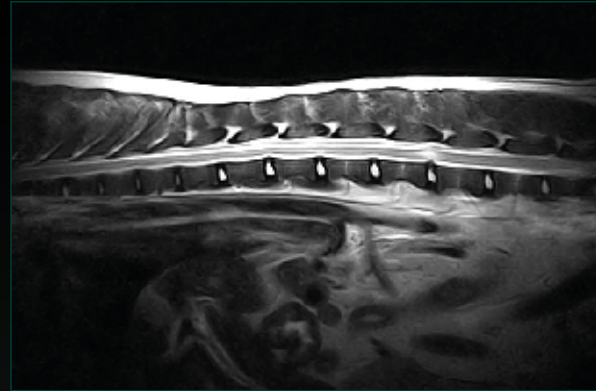
Cervical Spine
Transverse FSE T2



Lumbosacral Spine
Transverse Spin Echo T1



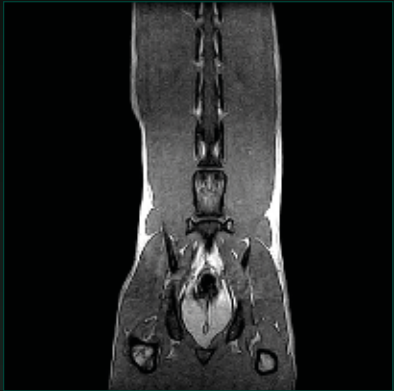
Thoracolumbar Spine
Sagittal Spin Echo T1



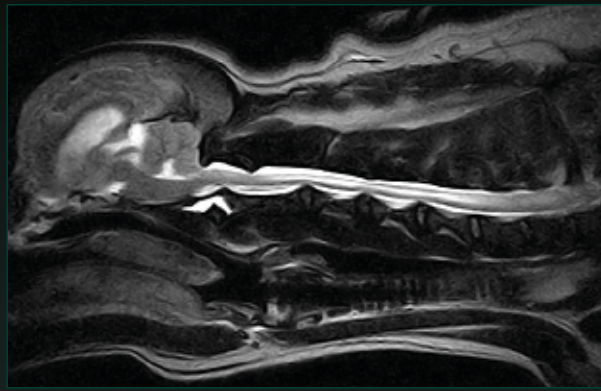
Thoracolumbar Spine
Sagittal FSE T2



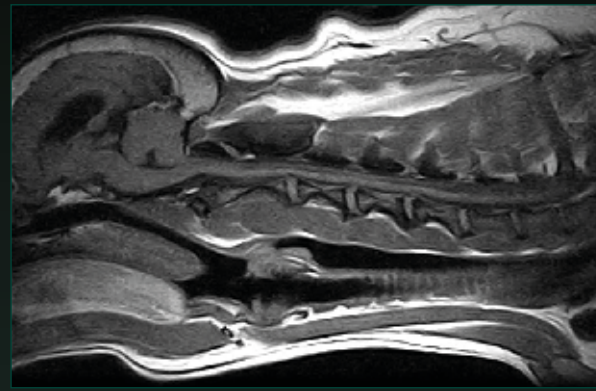
Thoracolumbar Spine
Dorsal Fast STIR



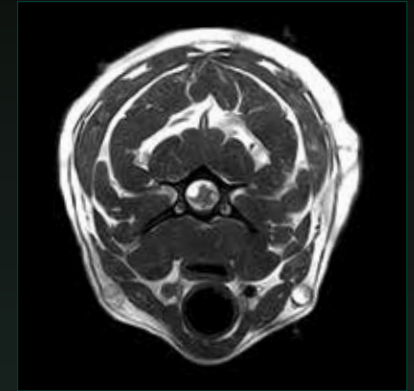
Lumbosacral Spine
Dorsal 3D SST1



Cervical Spine
Sagittal FSE T2



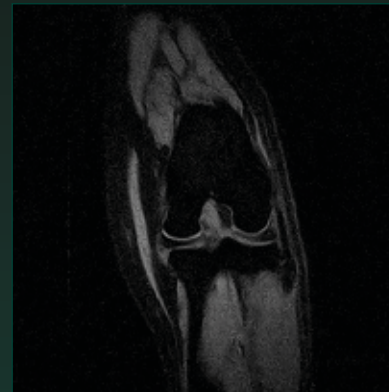
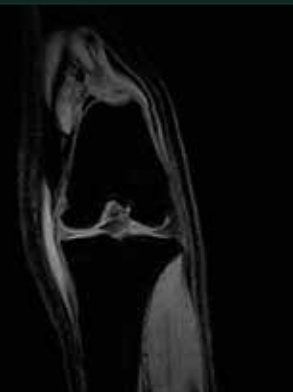
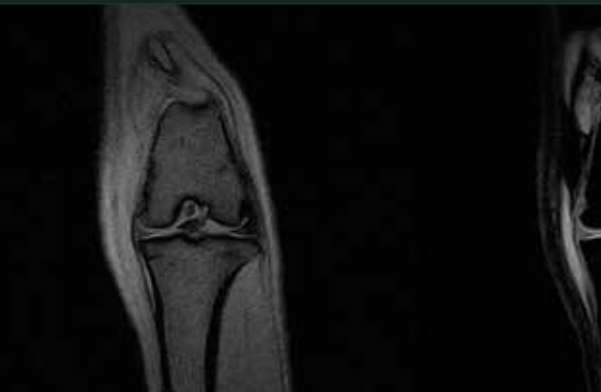
Cervical Spine
Sagittal Spin Echo T1



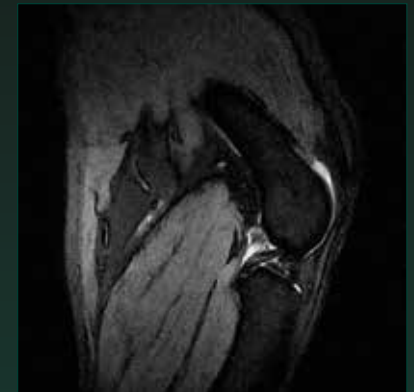
Cervical Spine
Transverse 3D Hyce



Stifle
Dorsal XBone



Stifle
Dorsal SPED



Stifle
Sagittal GE T2

Your ideas into practice

Productivity without compromise

Productivity is about ease of use, optimized scan times and patient care. Magnifico Vet covers it all.



Easy vet user interface

Esaote systems are known for being very easy to use. The Magnifico Vet is in line with this standard, offering a dedicated vet user interface focused on scanning with efficiency and the flexibility thanks to customized scans whenever needed.



Dedicated to vet MRI

The Magnifico Vet offers simplified workflow and protocol-driven scanning for fast exams and high throughput without compromising diagnostic quality. The system comes with veterinary protocols designed to speed up and simplify daily activities.



Patient care and positioning

The open structure and large patient table, in combination with the use of dedicated coils, guarantee an easy and fast positioning of animals of any size. The unique design and dimensions of the system allow the use of existing anesthesia equipment in a simplified and intuitive way.



Vet Coils



4 CHANNEL
LARGE SPINE COIL



HEAD COIL



SMALL PARTS COIL*



LARGE HEAD COIL*



DPA SPINE COIL*



SPINE COIL



SMALL HEAD COIL

Multi Channel Coils

Ample selection of dedicated coils for an optimal result and excellent patient experience. The multichannel design allows for a high SNR, high signal homogeneity and therefore high spatial resolution.

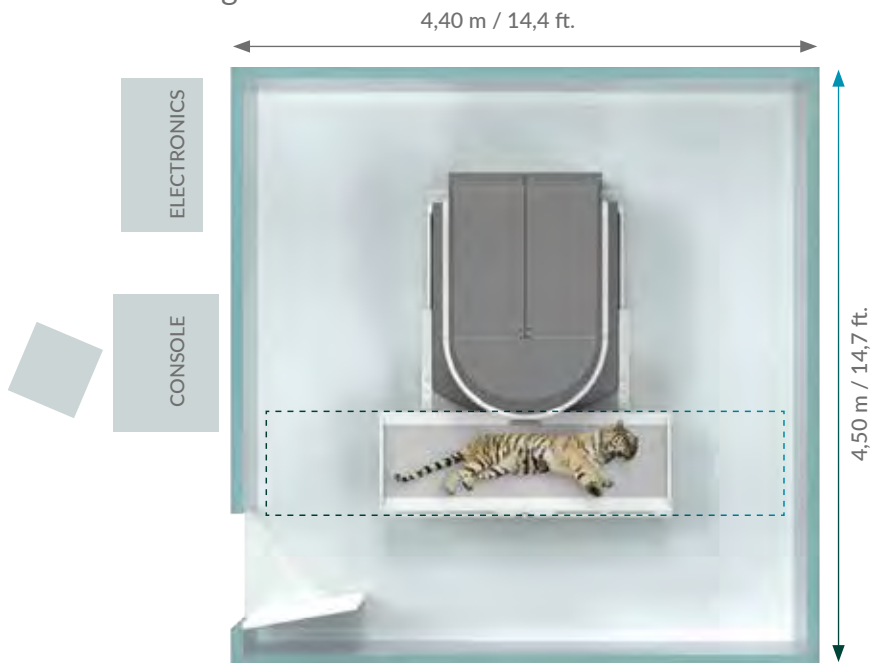


*optional

Esaote veterinary MRI, a solid investment

Magnifico Vet has been developed in line with the Esaote MRI philosophy which means quality MRI at reduced costs:

- Compact installation
- Easy operation
- Low running costs



Example of a minimal installation.
Please contact your local representative for a personalized design for your site.

Easy installation

Thanks to its smart design the magnet unit and RF shielding will fit in a space of 20 m² (212 sq.ft.).



Low running costs

- Low power consumption (maximum 3 Kw)
- No cryogenes, no water cooling
- Dedicated service contracts



Connectivity and Integration

System Life Cycle Protection

Magnifico Vet includes complete networking and storage features to work as a standalone or as part of an integrated environment.

Data security

Magnifico Vet is in line with today's requirements for data security with automatic antivirus security updates.

Standalone operation

As a standalone scanner, Magnifico Vet comprises an integrated DVD storage and retrieve software package, printer output facility and a patient-CD package.

Network operation

Magnifico Vet is DICOM and IHS compliant and offers smart solutions for connectivity to your PACS and teleradiology.

Remote service and customer care

All Esaote systems come with remote service capability. Many system parameters and system components can be checked via the remote service program specially developed for Esaote MRI systems. The remote service capability allows Esaote to react to any potential issue and to get you up and running faster!

Upgrades

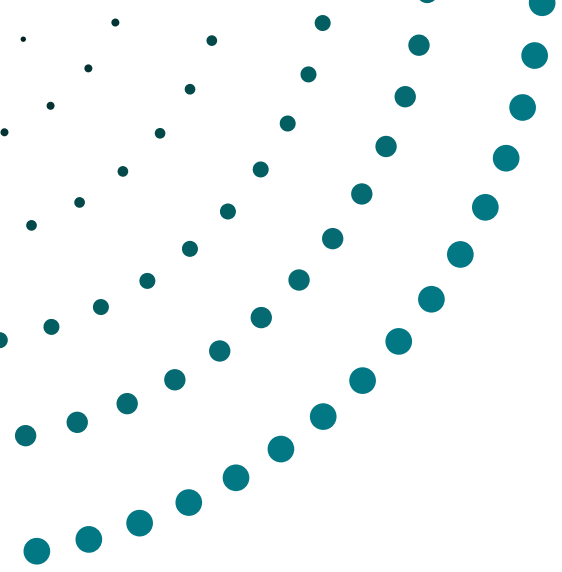
Esaote MRI systems are built for the future. The long-life cycle system can keep up with technology advances to satisfy veterinary market needs, maintaining, at the same time, a low cost of ownership.



Esaote MRI

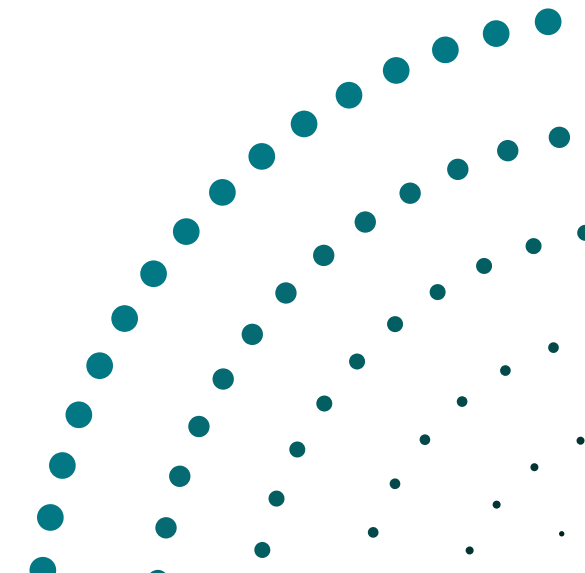
As one of the top MRI providers in the world, we commit to delivering high-quality products with unparalleled customer service.





AE TECHNOLOGY SRL

Via Vittorio Veneto, 12
20091 Bresso (MI)
TEL +39 02 35988192
www.aetechno.com
info@aetechno.com





 **Vet-MR**
Grande
eXP
Technology

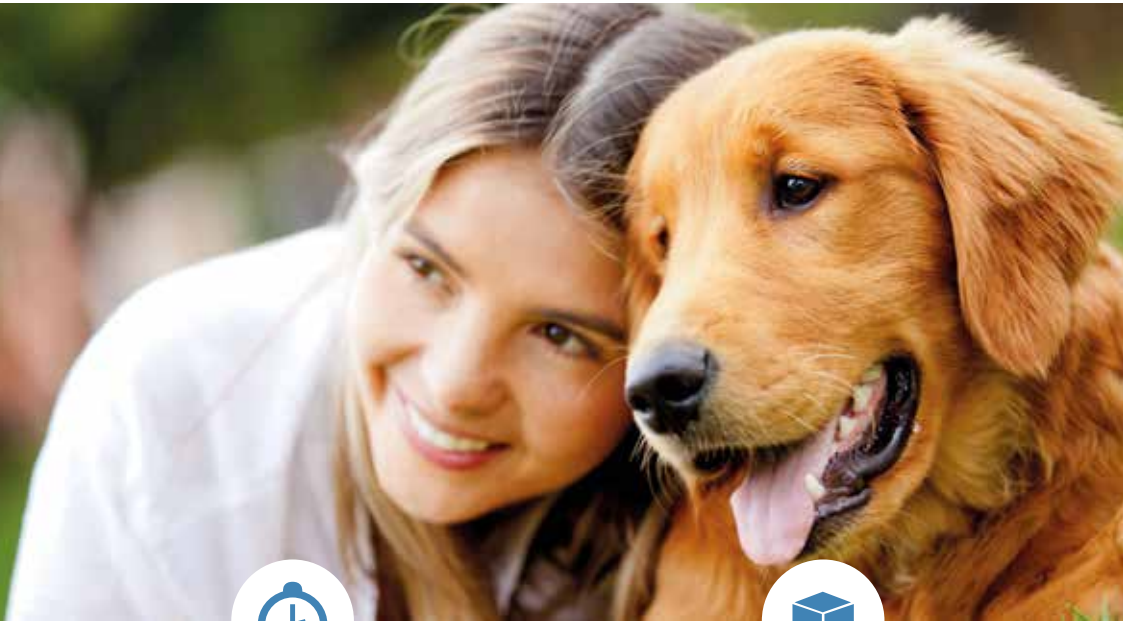


www.esaote.com

 **esaote**
veterinary

Introduction

High performance is the key to the Vet-MR Grande eXP: an innovative MRI system engineered for small animal applications. It is the result of years of experience and collaboration with leading clinics and offers the smartest solution for neurologists, radiologists, and orthopedic surgeons. Vet-MR Grande eXP meets the needs of all veterinary hospitals requiring excellent diagnostic capabilities.



Speed-Up PRO

A sophisticated acquisition and reconstruction method developed for the new generation of Esaote Dedicated MRI systems. Superior quality images can now be produced with substantially reduced scan times.

Gives you the flexibility to combine quality and productivity during the same sequence.



Evo 3D

Represents the next step in terms of isotropic 3D sequences.

Reduces the voxel size, enabling incredibly high-resolution Multi-Planar-Reconstruction (MPR).

In combination with Speed-Up PRO, allows for a 50% reduction in scan time in a single acquisition.



- ✓ Maintenance-free open permanent magnet
- ✓ 0.25 Tesla field
- ✓ Max RF power: 3000 W (2 Amps)
- ✓ Shimming: passive
- ✓ Gradient: ± 20 mT/m
- ✓ Slew rate: 56 mT/m/ms
- ✓ FOV: 27 cm
- ✓ Installation space of 19 m² required
- ✓ Minimal running costs:
1.3 - 2 kW (max) in normal 220/110 V power outlet
- ✓ Complete set of dedicated linear and DPA coils
- ✓ Acquisition sequences: FSE T1, FSE T2, XBone, 3d Hyce, Fast STIR, FLAIR, STIR Myelo, SE and GE



Unique Advantages

Technology, education, support and dedication to Veterinary MRI proven over more than 15 years to provide the best solution for your hospital or practice.



Premium Image Quality

Thanks to long-term cooperation with leading clinics we are able to test the study protocols and optimize the internal settings in order to obtain top image quality leading to reliable diagnosis and more efficient throughput.



Advanced Hardware & Evo 3D

With optimized features, performance, and image quality designed around the new concept of parallel computing, eXP substantially improves with optimized MRI examinations by reducing scan times and improving image quality. EVO 3D reduces voxel size, enabling incredibly high resolution Multi-Planar-Reconstruction (MPR).



Patient Handling and Monitoring

The Vet-MR Grande eXP has a wide opening to make animal handling extremely easy, even with very large animals. Moreover, with the Vet-MR Grande eXP the ease of monitoring and patient accessibility reduce risk during examination. The specific design of the system allows the use of existing anaesthesia equipment.



Minimal Running Costs

Unlike high field systems, the Vet-MR Grande eXP makes careful use of resources by requiring less energy and no cryogenic liquids. This results in very low maintenance costs and is a simpler and safer way to manage your practice.



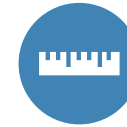
Training & Education

Immediately following the installation of the Vet-MR Grande eXP, a professional training course is held on site by a dedicated application specialist, who will show you how to obtain maximum performance from the system. In addition and thanks to the cooperation with our leading clinics we are able to organize educational programs by which customers can continuously increase their knowledge.



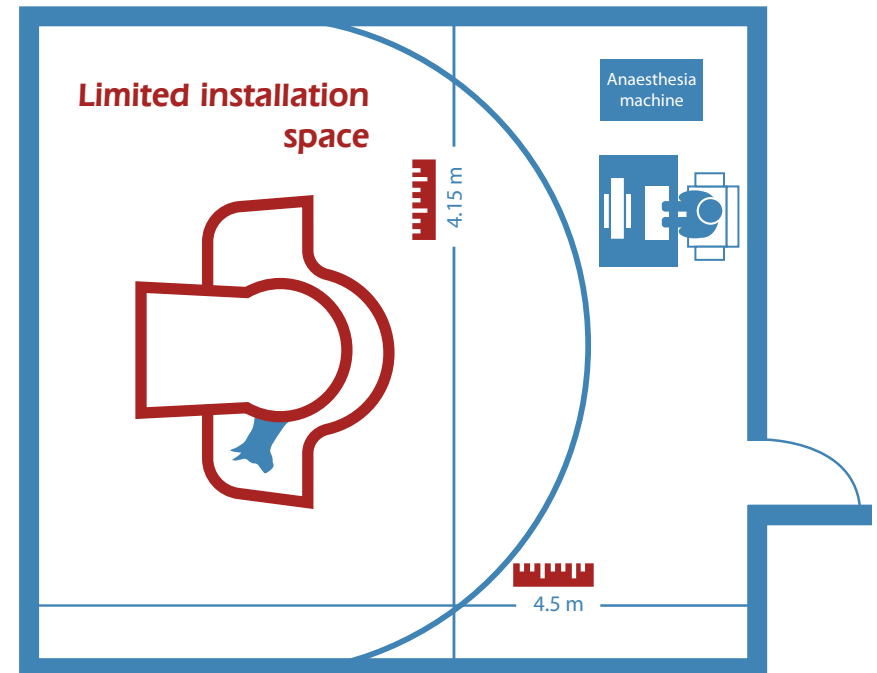
Service Online

Vet-MR Grande eXP features a very solid and stable technology. However, should you encounter a technical problem, the remote service program "ARAS," especially developed for Esaote MRI systems, enables service technicians to connect directly to any Esaote MRI unit for immediate check-up and troubleshooting.



Limited Installation Space

The Vet-MR Grande XP is ideal for installation in practices with small or limited space. The system features a specially designed and easy-to-install dedicated RF cage. Its innovative design, which makes use of existing illumination and air-conditioning, makes installation in a standard room (minimum 19m²) possible.



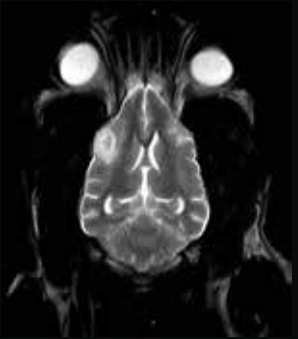
Clinical Cases



Nerve roots - 3D HYCE



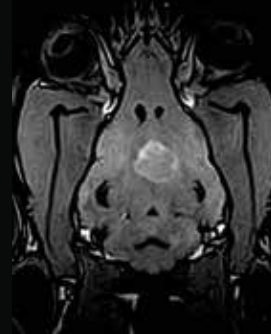
Arnold Chiari Malformation - Sagittal FSE T2



Brain Hematoma - Coronal FSE T2



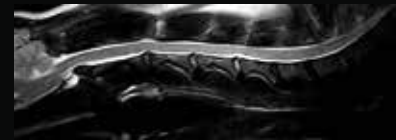
Brain Hemorrhage - Coronal GE T2*



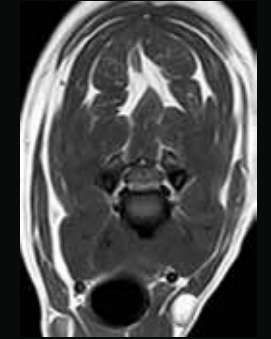
Pituitary Adenoma - Coronal 3D T1 Post



Post contrast Neoplasia C7 CB 3DT1



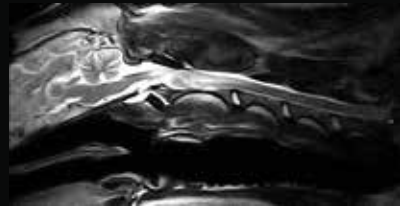
Pulpy extrusion C4_C5 sagittal FSE T2



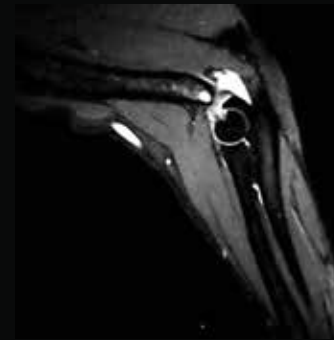
Pulpy extrusion C4_C5 Transverse SE T1



Sagittal Myelo



Neoplasia C2 - Sagittal FSE T2



Elbow Edema - Sagittal GE STIR



Wobbler Syndrome - Sagittal FSE T2

Clinical Cases



O·scan
equine



www.esaote.com

e saote
veterinary

Introduction

Sedated, stationary MRI is the standard of excellence recognized worldwide as the correct way to scan anatomy without compromising image quality. The O-scan equine covers imaging of the foot, pastern, fetlock, high suspensory, carpus and tarsus regions of the equine limb.

The O-scan equine is the ideal cost-effective MRI to clearly distinguish between bone edema, ligaments and tendons ensuring accurate imaging, through excellent contrast resolution and image quality; essential for optimal diagnosis.



- ✓ Open permanent magnet
- ✓ 0.31 Tesla field
- ✓ Max RF power: 1500 W
- ✓ Shimming: passive
- ✓ Gradient: ± 20 mT/m
- ✓ FOV: 14 cm
- ✓ Low power consumption: only 1 kW in normal 220/110 V power outlet
- ✓ Complete set of dedicated DPA coils

High Performance MRI at a fraction of the cost

The O-scan equine offers unsurpassable performance, comparable to the image quality of 1.5T systems.

The system covers imaging of the foot, pastern, fetlock, high suspensory, carpus and tarsus regions of the equine limb. With the special 3D SHARC sequence for articular cartilage evaluation and the XBONE to evaluate bone marrow edema and soft tissue structures, you can easily make a complete assessment of the suspected pathology in a very short examination time.

The most complete Pre-Purchase Examination (PPE) can also be executed very effectively with the O-scan equine, to evaluate the musculoskeletal system, where most abnormalities such as conformational defects, previous injuries and surgical scars can be identified as well as current soundness.

Unique advantages for you

Esaote's product development efforts have been highly focused on optimizing the features, performance and image quality of its MRI systems. eXP technology leads to faster overall system response thanks to a number of sophisticated MRI software techniques, designed around the new concept of parallel computing. eXP technology will substantially improve MRI examination by reducing scan times and improving image quality.



Premium Image Quality

Higher image quality for easier and more reliable diagnosis leads to optimal marketing for your services.



Low power consumption

Unlike high field systems, the O-scan equine makes careful use of resources by requiring less energy and no cryogenic liquids, resulting in very low maintenance costs.



Advanced Hardware

Optimized features, performance and image quality. Designed around the new concept of parallel computing, eXP will substantially improve MRI examination by reducing scan times and improving image quality.



Plug & Play

From the day of delivery, the system is fully operational and ready to use after 2 weeks; 1 week of installation, set-up and tuning and 1 week of operating and application user training.



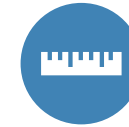
High Speed MRI

Shorter examination time means more comfort for the patient and higher efficiency with pre-programmed protocols that simplify and speed up examination procedures.



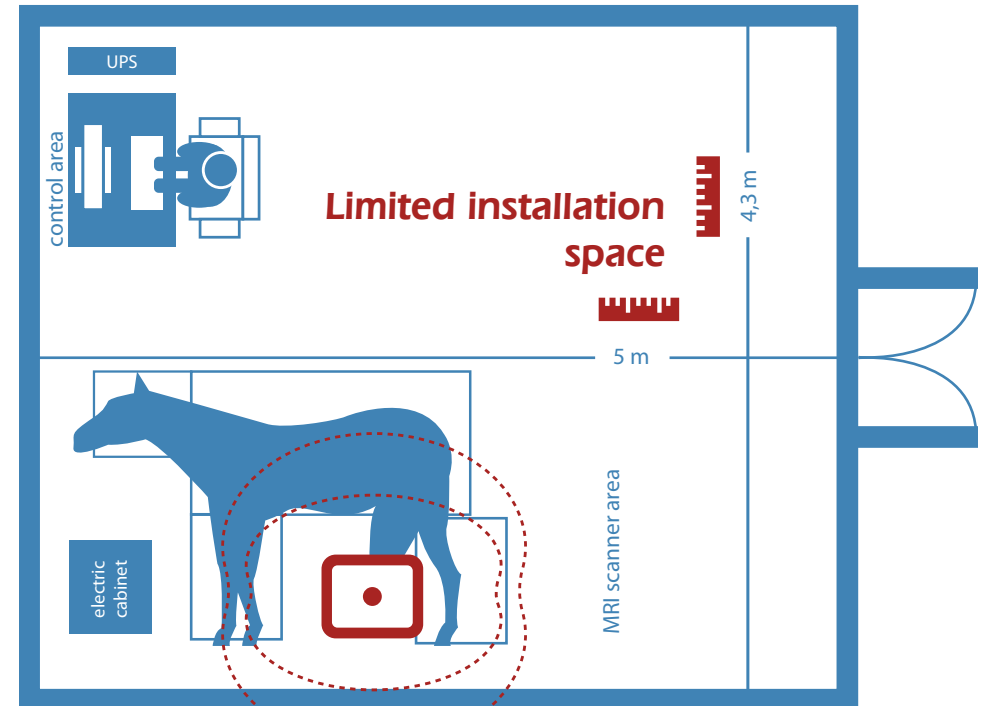
One Stop Shop

The fastest track to diagnosis and treatment, with the O-scan equine installed in your surgery room.



Limited installation space

The innovative design of the O-scan equine integrates a complete MRI system in one unique structure including RF shielding, with a low weight and extremely limited space needed for installation.



Weight: 1150 kg
RF-Shielding: Integrated Internal Shielding

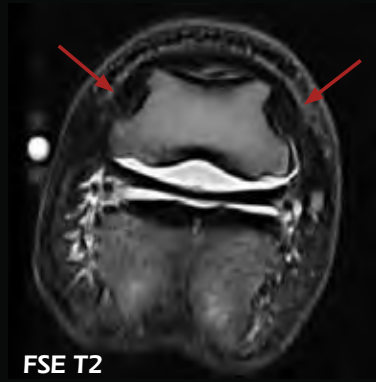
Typical Equine Scan Suite Layout

Case 1

Lesion of the collateral ligaments of the coffin joint



Significant T2 signal increase at the origins, proximal, mid and mid-distal levels of the medial and lateral collateral ligaments of the coffin joint.



In the axial plane the majority of the signal increases along the axial halves of the ligaments.

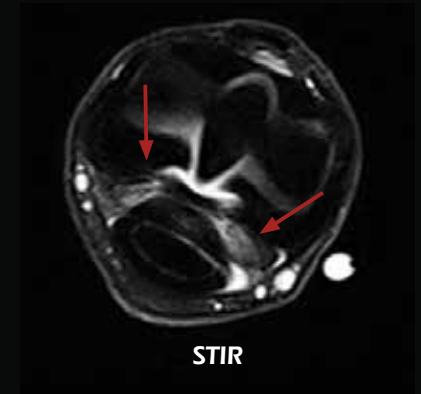
Case 2

Fetlock Arthropathy

104 slices
0.9 mm thick



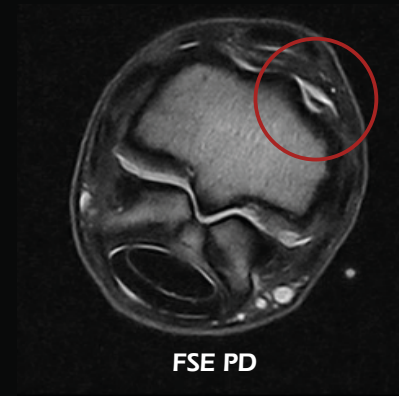
At the back of the metatarsosesamoidean joint there are areas with decreased cartilage signal on the condyles and dorsal sesamoid bones.



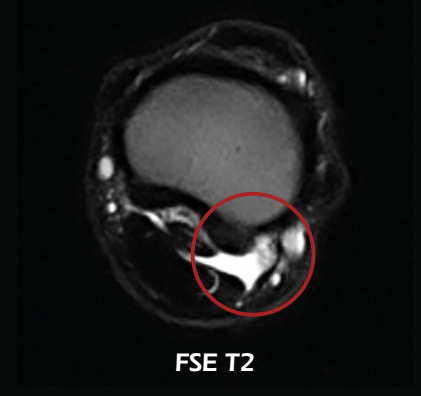
Mild/moderate signal increase in the axial halves of the medial and lateral oblique distal sesamoidean ligaments.



A tiny amount of STIR signal can be seen in palmar P3 where the distal impar ligament inserted. There is also a subtle increase in STIR signal seen in the navicular bone.



The dorsal-lateral synovial pad is prominently seen as it is surrounded by fluid. This type of finding is often seen with a fetlock arthropathy.



Unusual accumulation of fluid in the palmar lateral pouch of the fetlock joint.